

March, April, May 2012

# PAINTHORSE JOURNAL

OFFICIAL PUBLICATION OF THE PAINT HORSE ASSOCIATION OF AUSTRALIA





**When ENOUGH is....**

2009 AmQHA Stallion 15.3hh

World Champion

**Enough** \*IMP

Sire - Mr Elusive

(World Champion & Multiple World Champion Sire)

Dam - Ladys Luv Touchdowns

(World Champion & World Champion Producer)

*Reuschling*

Open World Champion  
Open Superior Halter  
High Point Halter Stallion of America  
High Point Junior Halter Stallion of America



Photos - KC Montgomery, Don Shugart Artwork Tania Hobbs



Service Fee: \$2,200 (GST Inclusive)

AI Only - LFG

Booking Fee \$550

Deductible/Non Refundable  
Plus Vet Collection & Freight

Approved mares only  
Multiple mare discount

proudly owned by  
*Smiths Creek Paint Horses*  
Enquiries Karen Lonski 02 6585 8277

[www.smithscreekpainthorses.com](http://www.smithscreekpainthorses.com)





# Real Deal Performance Horses



At **Real Deal**  
we believe our **Youth** are the future of our breed.

We need our Youth to ensure a healthy future so with this in mind a plan was hatched at the **2011 NSW State Show** to promote our and **Paint Breds**: The money raised from the cleaning of stables would go towards a **Jackpot** at the **2012 NSWPHA State Show**. We ended up raising a massive \$3,000 to be split between the **Youth** and **Paint Breds**.

The **Jackpot** will work with half the funds raised going to the **Youth** and half going to the **Paint Breds**. Every horse and youth that competes in the selected classes will be put in one hat and all the selected events into another hat. The hats will then be drawn at the **Highpoint Awards** dinner night. One **horse/youth** gets drawn; and one event gets drawn, if the horse/youth won that class then the jackpot is won by that **horse/youth**. If the drawn horse/youth didn't win that class the prize will jackpot to next year **NSWPHA State Show**.

**RD** will proudly sponsor a buckle to the jackpot winner of the horse/youth which was drawn. A **Jackpot** for **Amateurs** will be included for the **2013 NSW State Show**.

Nominated Classes: **Youth (Snr./Jnr.)** – **WP, HUS, Trail, Showmanship, Western and Hunt Seat Equitation and Horsemanship**; **Paint Breds** – **Led Trail, HH, Lungeline, WP, HUS, Trail and Western Horsemanship**. There will be no extra fee to enter these jackpot classes.

GOOD LUCK...AND HAVE FUN ON YOUR PAINT HORSE

With more generous donations of stable refunds at both the **Nationals** and the **NSW State Shows**, jackpots will be run for **Amateur, Paint Breds** and our **Youth** at the **2013 National and NSW State show**.



**Real Deal** will be sponsoring buckles for these events.  
If you have any enquires regarding the jackpot please phone

Arthur or Sharon Hupp on 0263 759675.

Important dates to lock into your calendar  
**NSWPHA 2012 State Show: 9th - 14th May 2012 at SIEC**





# President's Report

## Travelling well

In the last Presidents report I submitted for the journal publication I asked the question where are we now? And quoted some basic figures to inform our membership of a brief description of where the PHAA finances are. I am pleased to again report that the bank balance in our main accounts either have stayed the same or increased. General account balance which is where we run the PHAA business from is \$85,778.00. The Safety Net account \$20,623.00 and the PHAA Building Fund currently has \$73,298.00 in trust. As you can see the bank balances are healthy and I can not recall of the time that I have previously been on the PHAA Board in the month of February that the monies held in these accounts have never amounted to what we currently have.

We have just conducted a Board meeting from the 7th through to the 9th of February and a considerable work load has been achieved by the current group of Board members. The National Show planning is well underway and from the enquiries it looks as if it could be one of the biggest shows that the PHAA have conducted. There is a lot of focus on members having the time to enjoy the experience of showing at the National Show. We have programmed for fund raising activities such as the Youth Goods and Services Auction, Pancake Cook Up and Raffles. We are also conducting a fashion parade for the entertainment of participating members. We once again have engaged the friendly services of Carol Gleeson to be the show secretary as I am sure you are used to working with Carol and nothing is a problem to her.

The Amateur Owner Portfolio has increased their funds with a great effort from Director Shirley Sommer and has increased through their fund raising efforts for a bank balance of \$6824.96. The Amateur Owner Portfolio is still pushing forward with lots of ideas for fundraising and activity programs.

The PHAA Youth Team was selected at the last Board Meeting and have gone forward to the tasks set before them enthusiastically to raise the funds required to attend the 2012 APHA Youth World Show. One of the biggest events that the Youth Portfolio conduct during the year is the Youth Goods and Services Auction where the support previously from PHAA members has been great on occasions raising up to \$6000.00 to assist with the youth trip or the youth account. We ask anyone from the PHAA if they have some goods or services to donate to please contact myself [craigadengate@bigpond.com](mailto:craigadengate@bigpond.com). Collectively through your support we can provide a great night of entertainment and help the Youth Portfolio.

Points and Awards Portfolio which I also take care of has been a considerable challenge within the last nine month period. With the finalisation of the audit enabled us to discover within the points reporting system areas needed for improvement. PHAA Board is currently reviewing the comprehensive show and contest rules report established from the audit so we can obtain more efficiency needed to reward our showing members points appropriately gained. Gail Keech our points co-ordinator and employee of the PHAA has taken ownership of the points recording system and has worked extremely well to attend to our show members requests and I would foresee that we would expect that our show performance points and awards will now be administered as the PHAA members would expect.

One of the most important events of the year for PHAA administration of their Association, the 2012 Annual General Meeting will be conducted on Saturday 28th April, 2012 from 5pm at Allendale Motor Inn Function Centre. There are considerable

important items to attend to with the presentation of the financial audited accounts and the consideration of motions submitted by members and the election of Directors who has the responsibility to administer the running of the PHAA. There will be three vacancies as a requirement of the PHAA Constitution. Standing down from NSW will be Sally McPhee, from VIC/TAS/SA/WA Lydia Hantke and from International and other position Jeffrey Hall will be standing down. I believe that some of these Directors will be restanding but I also encourage anyone of you who have enough enthusiastic commitment to help the PHAA that they nominate to make a difference for the PHAA.

A couple of weeks ago I was involved here at Wauchope in our local clubs training day and a considerably new member who I was helping at the time asked me had I done the right thing. This member had just purchased a black and white paint horse from Victoria from an advertisement and had really no knowledge of the breeding of the animal, she thought it looked nice. Often at times our PHAA members put considerable pressure on themselves with decision making and purchasing and showing their horses. I replied to her this horse you have purchased will not be the last horse you will probably buy but through purchasing this horse and being involved in two ways a companion animal and as a horse for you to show and compete on will be part of your evolving experience. This horse will be part of your learning, being a good or average horse will teach you how to overcome the challenges that you will face and if you are able to overcome and continue to persist in the future will have given you the opportunity to mould the person that you may become in the future.

This is the last Presidents Report to be posted in the journal for the Board of Directors period. I have enjoyed sincerely working alongside the group of people that the members have elected and will look forward in the next 12 months to continue to work collectively with the Board of Directors that will be voted in by you the member. Some of the workload that our current Directors have committed to the PHAA is a part of where we are today, travelling well.

**Craig Denegate**  
**PHAA President**



# PHAA Building Fund: A working paper

Malcolm Hume: Director PHAA

**The following document is designed as a working paper to elicit responses from members and generate ideas as to a proposed use of the building fund. This paper does not mean that any action has been proposed or taken by the Board of the PHAA.**

## **Does the PHAA building fund meet the objective of providing a head office for PHAA?**

The PHAA building fund currently stands at \$73298.20. This amount is increased annually by the addition of a subscription added to the membership and any interest gained on the account.

After carrying out research into the current real estate situation in several areas of NSW and Queensland, that had access to adequate transport facilities, and being central to the majority of members, it was established that the current building fund, and its annual increase, would not and could not meet the aspirations of the PHAA.

Investigation shows that the current amount, and annual increase, could cover the cost of a deposit but not the outright purchase of a facility.

## **Is there a way ahead?**

After consultation with the board and at the request of the President an investigation was conducted into any possible ways of the PHAA meeting its aspirations of having its own headquarters for the use of its office staff and members.

The model chosen has been discussed by the board and is seen as the most viable way in which to move the PHAA forward.

## **The proposed regional area.**

It has been decided that the most appropriate site that would best suit any PHAA headquarters is Tamworth NSW. This was decided after:

- comparing real estate prices in Dubbo, Tamworth, Ipswich and the border area of NSW and Queensland,
- access for members and the board,
- the location of AELEC and the use of the facility for the National Show in the foreseeable future, and
- discussions with the Tamworth council.

## **Why Tamworth?**

Apart from the points listed above, discussion with the Tamworth Council has identified the building blocks opposite AELEC are available and the desire for the council to have it as a hub for organisations utilising the facility.

While the current cost of purchase and building a facility are beyond the reach of the PHAA at present, investigation has shown a possible way ahead.

## **Affordability**

One way in which any proposal could be made viable is sharing any building with another organisation wishing to move to the area. This would best be suited by a non equine organisation but another livestock organisation thus eliminating any conflict of interest.

Any such building would not be shared office space but a building with two entrances and facilities in both office spaces. The only joint facility that is seen as possible is a board/meeting room which could be shared as required on a booking system.

The possibility of a stand alone facility for the PHAA has also been investigated with costs determining any outcome.

The ability of the PHAA to raise the required revenue is the key to either proposal.

## **How could this be funded?**

It is proposed that a one off building levy be imposed on all members of the PHAA. This would eliminate the annual building fund surcharge. A levy would be placed on all new members of the PHAA so as equality remained for those who committed to the original levy.

Additionally, any building could have its naming rights offered for a cost. For example it could be "The ABC Building" home of the PHAA. This could also be extended to naming rights of the national show for a given period. A figure of \$10000 for this would be sought.

Also any person/organisation could purchase a construction plaque, Platinum (\$5000), Gold (\$3000), Silver (\$2000) or Bronze (\$1000) for hanging in the building foyer for all time.

## **Current membership**

The last figures received by the author showed that the PHAA has:

Full membership	849
Constituent	322
Life	64
Junior youth	110
Senior youth	370
Amateur owner	370
Master amateur	14

\*This figure is a guide only and it is not the intention of any levy being placed on any person twice.

## **What will this achieve?**

Using the figures above the PHAA could raise in the vicinity of \$200000 with a levy of \$150 and \$280000 if set at \$200. When added to the current building fund, a figure in excess of \$350,000 could be achieved. These figures are a guide only.

## **Ongoing costs**

The ongoing costs of the PHAA operating its own facility would more than be met by the savings in monthly rental which is \$1680, in excess of \$20000 per annum. This should also see a significant increase in operating revenue available to the PHAA. We currently pay for all office outgoings and the only significant additional costs would be building insurance, water rates, council rates and building maintenance.

## **What next?**

It is hoped that this paper will encourage members to think proactively on this matter and any feedback received will be used to put together a proposal for the membership at the upcoming AGM. Please send your thoughts, ideas to [layton.valley@bigpond.com](mailto:layton.valley@bigpond.com) for consideration in any document to be placed before the membership at the AGM.

## **Conclusion**

The current model used by the author is not definitive but is used to give the membership of the PHAA an idea of what could be achieved in the short term.

## 2011 - 2012 BOARD OF DIRECTORS

### PRESIDENT

Craig Dengate (NSW & ACT)  
Phone: 02 6585 8277 Email: craigadengate@bigpond.com

### VICE PRESIDENT

Helen Bentley (QLD)  
Phone: 07 5494 1071 Email: kunda@iprimus.com.au

### COMPANY SECRETARY

Jeffrey Hall (International & Other)  
Phone: 02 6887 2280 Email: hallmarkfarm@bigpond.com

### DIRECTOR

Sally McPhee (NSW & ACT)  
Phone: 02 4938 0278 Email: sallymaymcphee@gmail.com

### DIRECTOR

Shirley Sommer (QLD)  
Phone: 07 5494 3118 Email: sommerdown@bigpond.com.au

### DIRECTOR

Malcolm Hume (VIC, TAS, SA & WA)  
Phone: 03 6383 1176 Email: malcolm.hume@live.com.au

### DIRECTOR

Lydia Hantke (VIC, TAS, SA & WA)  
Phone: 03 6250 1222 Email: lhantke@gmail.com

## DIRECTOR PORTFOLIOS

•AMATEUR OWNER	Shirley Sommer
•HALL OF FAME	Craig Dengate
•HSAA	Shirley Sommer, Helen Bentley
•JOURNAL	Helen Bentley
•NATIONAL SHOW	Helen Bentley, Lydia Hantke, Malcolm Hume
•REGIONAL CLUBS	Lydia Hantke
•REGISTRATIONS	Sally McPhee
•REGISTRATIONS COMMITTEE	Sally McPhee, Helen Bentley, Lydia Hantke
•YOUTH	Craig Dengate

## NON DIRECTOR PORTFOLIOS

•FUTURITIES	Sally McPhee
•WEBSITE	Sally McPhee
•INTERNATIONAL	TBA
•POINTS & AWARDS	Craig Dengate
•YISC STALLION SERVICE SALE	Craig Dengate

## OFFICE STAFF

**General enquiries**  
office@painthorse.net.au

**Office Supervisor, Registrar: Amber Weldon**  
amber@painthorse.net.au  
registrations@painthorse.net.au

**Points Coordinator: Gail Keech**  
gail@painthorse.net.au  
pointscores@painthorse.com.au

**Member Services: Keleigh Barrett**  
phaa@painthorse.net.au

## DISCLAIMER PAINT HORSE JOURNAL

Statements, opinions and articles printed in the Paint Horse Journal do not necessarily reflect the opinion or the views of the publisher, or the Paint Horse Association of Australia Ltd nor does the publisher of said articles constitute endorsement of their content. While due care and attention is paid to the preparation of this magazine the publisher takes no responsibility for any misprint or errors and their subsequent effects. The content of advertising material that appears in this magazine are the responsibility of the advertisers.

## COPYRIGHT

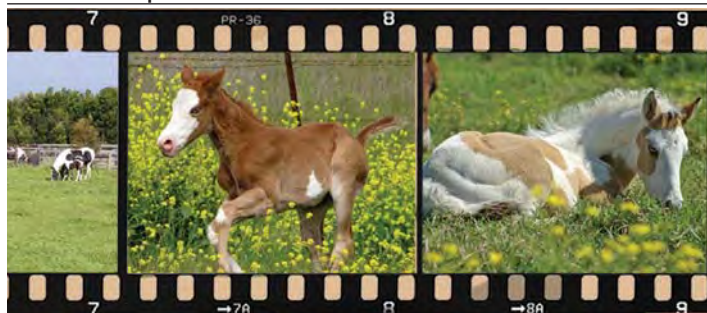
No part of this magazine may be reproduced by any means without the written consent of the publisher. Advertising prepared by the publisher remain the property of the publisher.

# Content

Presidents Report	4
PHAA Building Fund	5
Notice to all Amateurs	8
AO Lists Update	8
Amateur Spotlight & Amateur Report	9
APHA 2012 World Youth Games Team	10 - 11
PHANZ 2012 Youth Team	11 - 12
News	12 - 13
National Show Report & Affiliated Clubs	14
Rule Changes	15 - 16
Office Reminders	16
Worming New Strategies	17
Western Fashion Forecast	18 - 19



Photo Competition 2012	20 - 22
------------------------	---------



Team Sorting	25
2012 National Show Program	26 - 27
Sarcoids A Review	28 - 30
Pretty Sensational	32 - 33
High Point Senior Youth	34
Honour Roll 2010-2011	35
Temperature, Pulse, Respiration	36 - 38





## Editor's letter

**Well here we are again, where does the time go.**

The Paint Horse Nationals are almost upon us once again. I wish everyone success but most of all I hope one and all enjoy the experience of showing, catching up with old friends and making new ones. I will be there with several horses being shown so come and say hi.

Next issue will be a bumper results issue as we will have the many results from State Shows and the National Show in it.

Stallion owners should now think about advertising for the breeding season as it is only a few months away again. Work out your budget and book your ads early. Remember ARTWORK IS FREE.

Take care until next time.

Tania Hobbs  
 07 3206 7567 | 0419 742 949 | journal@painthorse.com.au

### REMINDER:



**Please make sure all your paperwork is complete before sending it on to the office.**  
**Please ensure that your email details are kept up to date with the office so we can keep in contact and keep you informed.**

### MEMBER SERVICES

Paint Horse Association Of Australia Ltd  
 ABN 43 003 155 691  
 Post: PO Box 1008 DUBBO NSW 2830

Telephone: 02 6884 5513  
 Facsimile: 02 6884 5517  
 Email: office@painthorse.com.au  
 Web: www.painthorse.net.au

#### Office Hours

Monday to Friday – 9.00am to 5.00pm  
 (excluding public holidays)

#### Phone Hours

Monday to Friday – 9.30am to 4.30pm  
 (excluding public holidays)

#### Registrations (Amber)

Email: registrations@painthorse.net.au

#### Memberships

Email: memberships@painthorse.com.au

#### Show Points & Honour Roll

Email: pointscores@painthorse.com.au

#### Paint Horse Journal (Helen Bentley)

Email: journal@painthorse.com.au

#### Website (Amber)

Email: webmanager@painthorse.com.au

### EDITOR/ADVERTISING

Tania Hobbs

### DESIGNER

Anja Mauer Graphical Services

### PRINTER

Graphic Impressions

Time To Say Goodbuy

39 - 41



Probiotics & Yeast Culture Products

42 - 44

2012 PHAA Approved Shows

45 - 46

PHAA Schedule Of Fees

47

Business Directory

48 - 50



**Paint Horse Association  
 of Australia  
 now on FaceBook**



# PHAA AWARDS

## AMATEUR SUPERIOR AWARD

### Showmanship

Joy Conn

## AMATEUR BRONZE CENTURY

### Showmanship

Joy Conn

## BRONZE CENTURY AWARD

### Halter (Paint Bred)

Pokos Stolen Ransom

## SUPERIOR ALL ROUND HORSE AWARD NO 15

Pretty Sensational

## SUPERIOR HORSE AWARD

### Halter

Moneyman

## AO Filly/Mare

Pretty Sensational

## AMATEUR CHAMPIONS HORSE AWARD NO 27

Pretty Sensational

## DISTINCTION AWARDS

### Trail

Dressed To Kill

### Hunter In Hand

Instantkash

### Halter

The Illusionist

## HORSE AWARDS - REGISTER OF MERIT

### Halter

Blue Gums Dark Knight

My Jeans Are Shameless

Brass Gelly

### Hunter In Hand

Brass Gelly

# Notice to All Amateurs

**Are you just starting your show career with your Paint Horse?  
Are you eligible for Amateur status?**

**The PHAA has a Novice Amateur program to encourage and award your efforts for an additional fee of \$15. Please take the time to read the Novice Amateur Rules and consider participating.**

## 237.(A) NOVICE DIVISION – AMATEUR OWNER

All Amateur Owners are eligible for Novice Amateur Owner status provided they meet the criteria as set out below –

- (a) Novice Amateur Owners must be current financial PHAA members and current financial PHAA Amateur Owners.
- (b) There will be two divisions for Novice Amateur Owner – Showmanship and Ridden Performance. On attaining 50 lifetime points in Amateur Owner Showmanship classes or a win in an Amateur Owner Showmanship class at a National or State Championship Show (PHAA, AQHA or AAA), providing there were at least 5 entrants in that class, that Novice Amateur Owner will no longer be eligible for Novice Amateur Owner Showmanship events from the 1st of August after attaining that level.
- (c) On attaining 50 lifetime points in Amateur Owner Ridden Performance classes (combined points from all ridden performance events, not individual events) or a win in an Amateur Owner Ridden Performance class at a National or State Championship Show (PHAA, AQHA or AAA), providing there were at least 5 entrants in that class, that Novice Amateur Owner will no longer be eligible for Novice Amateur Owner

Ridden Performance events from the 1st of August after attaining that level.

- (d) Novice Amateur Owners are eligible to compete in Amateur Owner events and Novice Amateur Owner events.
- (e) An application form will be completed and submitted to the PHAA for approval by the PHAA office.
- (f) Any Youth progressing to Amateur Owner will not be eligible for Novice Amateur Showmanship status if they have attained 100 lifetime points in Youth Showmanship events. Any Youth progressing to Amateur Owner will not be eligible for Novice Ridden Performance status if they have attained 100 lifetime points in Youth Ridden Performance events

## HIGH POINT NOVICE AMATEUR OF AUSTRALIA

A Year end award will be given to the Novice Amateur with the highest number of points provided that –

- (a) points have been earned in a minimum of three events over two categories
- (b) a minimum of 5 points have been earned.
- (c) Points have been accumulated on a one horse/one novice amateur basis

## PHAA OPEN AMATEUR OWNER LIST UPDATE SINCE LAST PUBLICATION

WENDY ADAMS	QLD	JENNY DELLER	QLD	DAWN O'REILLY	NSW	DEIDRE STOITSE	VIC
GREG ALLCHIN	NSW	CRAIG DENGATE	NSW	ALICE OVERINGTON	QLD	ANGIE STURZAKER	QLD
JOANNE ALLCHIN	NSW	KERRY FLETCHER	QLD	CATHY PARKES	QLD	MICHELLE SUTHERN	NSW
ELLIE ANDERSON	QLD	MELANIE FORRES	NSW	HEATHER PATTINSON	VIC	DEBBIE TAYLOR	QLD
MELISSA ARMITAGE	WA	JUNE GATEHOUSE	QLD	RENAE PIKE	NSW	JOANNE TAYLOR RUSSELL	
DEBBIE BARBER	NSW	KIM GRIFFIN	QLD	LYNNE PONTING	NSW		NSW
DEBBIE BARBER	NSW	TROY GRIFFIN	QLD	RICHARD PONTING	NSW	ALYSON THOMPSON	NSW
TRACEY BEAR	QLD	SUZANNE GROUNDWATER		BRUCE PONTING	NSW	KATE THOMPSON	QLD
WAYNE BELLENGER	NSW		QLD	JOANNE RALSTON	NSW	SUSAN TIRKOT	VIC
SHELLY BIANCON	VIC	MARY HAMERS	VIC	BEV ROUT	VIC	EVELYN TOWILL	NSW
SUZANNE BONE	NSW	KYLIE HARDWICKE	NSW	HAL SAVILL	QLD	WYNSOME TROST	QLD
TERESA BRABECK	QLD	ANNIE HAY	NSW	JESSICA SCHOFIELD	NSW	JILL WAGNER	NSW
GAIL BURGESS	NSW	VICKI HUME	TAS	MARYANN SCHUEMAKER		HELEN WATSON	SA
KIMBERLEY BURTON	QLD	ANDREA KLIENDIENST	QLD		QLD	NICK WEILER	VIC
LINDA CAFÉ	NSW	SAMANTHA KNIGHT	NSW	LEE ANN SHELTON	VIC	ALLISSA MARION WELCH	
TRICIA-LEE CAMPBELL	QLD	DEBORAH LINDEBERG	QLD	ROBERT SIRETT	QLD		NSW
KRISTIN CARROLL	NSW	KAREN LONSKI	NSW	SHANTON SMITH	NSW	LYNETTE WELCH	NSW
SHIRLEY CLAY	VIC	TINA MARSDEN	NSW	SHIRLEY SOMMER	QLD	NERIDA WINTERS	NSW
BRIDGET CONNELLY	QLD	SHARON MARSHALL	TAS	BERNICE SOUTHWELL	ACT		
SHARON DANN	VIC	SHARRON MOORE	NSW	MAREE SOWDEN	QLD		
JENNIFER DAY	NSW	PETER NORLYNG	VIC	KARL STALLON	SA		

## PHAA NOVICE AMATEUR OWNER LIST UPDATE SINCE LAST PUBLICATION

EMMA PERKINS	NSW	KAREN GURNEY	QLD	KARINNE GELDERMAN	NSW	SHARON CAMERON	QLD
ALISON LATTER	NSW	BEV ROUT	VIC	JANE SHELVEY	QLD	JANET O'DONNELL	NSW
DEBBIE TAYLOR	QLD	BIANCA BUNTING	VIC	ANGELA CROSSLEY	VIC		

## PHAA MASTER AMATEUR OWNER LIST UPDATE SINCE LAST PUBLICATION

HELEN WATSON	SA						
--------------	----	--	--	--	--	--	--



# Amateur Spotlight – Sharon Ratsch

## 1. Where do you live?

McDonald Park South Australia.

## 2. Who is your current Paint Horse?

Sure To Be An Ace 9329 6 year old Tobiano gelding.

## 3. How long have you been riding Paint Horses?

5 years. Before this I was showing an Appaloosa gelding.

## 4. Who was your first Paint Horse and when?

Sure To Be An Ace I bought as a yearling, I broke him myself and am still showing him.

## 5. What is your favourite event and why?

Hunter Under Saddle, because I came from an english showing background.

## 6. Boots, Heels or Thongs?

Definitely boots, I live in them.

## 7. What couldn't you do without?

My family and animals.

## 8. What is a typical day for you?

Up at 5.30am take my son to work. Head to the Gawler race



track, work six racehorses, then back home, spend rest of day running our stables.

## 9. Who inspires you within the horse industry?

Anyone who is willing to help and give me advice, and enjoy what they do in life.

## 10. Name your most memorable achievement.

I would have to say winning Hi Point Paint Horse of SA three years in a row 2008, 2009, 2010. and winning Hi Point Amateur Owner buckle at the SA State Show in 2010 and 2011.

## Amateur Report

### Hello Once Again

Time is flying and much is still progressing in the Amateur portfolio. The PHAA currently has 323 Amateur Owners as at 31 January. Since the introduction of Masters Amateur at the beginning of August 2011, there are now 42 Masters Amateurs listed. There are 17 Novice Amateurs as well. Many are new members to the Paint Horse Association and I would like to take this opportunity to welcome you all to the Amateur program.

The Amateur Owner account is looking healthy once again. The 2010/2011 Amateur Hi Point awards have all been announced and the prizes have now been ordered. A huge congratulations to the winners for the 2010/2011 show year. A full list appears in this Journal.

The National Show is fast approaching and I hope the many Amateurs planning to make the trip to Tamworth, travel safely and thoroughly enjoy the experience.

Please don't forget the Amateur meeting to be held at the National Show on Tuesday 1st May 2012. This is your chance to let me know your thoughts and suggestions.

The Amateur Fashion Parade is scheduled for Friday 4th May at 7.30pm at the National Show. Anyone wanting to help with the fashion parade please contact me. I would be happy to hear from you!

The new Amateur rule will be decided at the June meeting. You still have a chance to give your input and I urge you to do so. I have had concerns forwarded to me about Amateur Halter showing. As a result I have moved to amend the rule further

and have included details once again in this Journal. Please take the time to read the rule and this amendment?

There has been an Amateur/Youth Clinic with Travis Humphreys from TNT Training organized at the Indoor Arena, Maleny Show grounds (Qld) on March 17th in conjunction with SEQPHC. I would like to thank Travis for his generous offer & time. The cost is just \$100 per rider for the day. Any excess funds will go to the Amateur account as fundraising.



Shirley Sommer

I encourage more clinics to be run in conjunction with affiliate clubs as part of an Amateur education program. There are rebates available to clubs for Amateurs and Youth attending, to assist with costs so if you need help please let me know!

At the last Board meeting I requested a portion of the Amateur fee be transferred annually to the Amateur account. This was declined, so the need to fundraise for Amateur portfolio is vital. There have been some "hiccups" with the planning of the Trainer Auction. Hopefully this will be resolved shortly and the Auction will be able to go forward in some form. I am hoping to have this organized by the National show so that I can give an update at the next meeting. Any other suggestions for fundraising would be appreciated.

I look forward to catching up many of you at the Nationals,  
Yours in Paints

**Shirley Sommer**



# PHAA 2012 WORLD YOUTH GAMES TEAM

The chance to travel to the APHA World Show and compete is a dream many PHAA Youth have and for these five girls it's a dream that's about to come true. In June Jaydene, Victoria, Nicole, Emlyn and Maddison will board a plane to fulfill a dream they all share. The experience will be life changing and we would like you to share in their experience. You can follow the lead up to the show and the trip on the Teams facebook page "PHAA 2012 Youth World Games Team". In the meantime please meet our 2012 Team ...



**Hi I'm Jaydene from Queensland** and I've pretty much been around horses all my life, although we got our first Paint Horses in 2002.

My first look on a western show was the Queensland

State Show in 2003. I loved watching all the events and always dreamed to show paints. Our family friend was kind enough to let me ride his beautiful horse 'Twin Oaks All Talk' (Jake). I gained enough confidence to lope him after having a bad first experience cantering a horse.

I then started to ride Beryl Follingtons horses as we didn't have any suitable for my level of experience at the time. I started showing at the beginning of 2009 on Blue Gums Shaken FX (Shakie). After showing for the year of 2009 and 2010 I received the High Point Youth of Australia title. My next aim was to get into the youth team. Throughout my year 11 and 12 years at school I spent the majority of it riding. According to me, horse riding was so much more important than school. It was rewarding and it was something I enjoyed doing more than anything. Last year I rode 'Stand and Deliver' (Stanley) and this year I look forward on riding Nicole Brooms horse 'Rich Art' (Mack).

My favorite events would have to be Hunter Under Saddle, Western Pleasure and Horsemanship. The thing I'm looking forward to most when we head over to Texas is riding all differently trained horses and visiting different ranches. I'm also looking forward to all the shopping. I'm so excited that I've made the team and looking forward to this June/July. This trip is something all Youth should aim for. It is a once in a life time experience and I already know it will be well worth it.

**Hi I'm Victoria Egan from NSW,** I have been involved with Paint Horses all my life, my first completion was in 1996 age 3 on Matlock Rose, I then moved on to various different horses such as Kaylyle Peppy Sioux, Dell Robinson, Miss Luann to name a few. My current horse is LP MR RICH and I have been competing on Buddy for 2 years now. I was very fortunate that

Graham Thorton leased him to me as he is a super horse. Buddy and I are always having fun, we are always trying different things together and we both love it. I

also have a Paint Bred Yearling DSV I'M YOUR MAN, Boots has only been to three shows and has placed very well so we are hoping to have a very good show season with him.

My favorite event would have to be any Pattern Class, I love the challenge of a pattern work out and my other favorite would have to be Trail. This year I am looking for a new challenge so I have started to train Buddy in Western Riding and I'm really enjoying it. I really can't wait to go back to Texas, this will be my third trip to Texas, and every time I have been it has been a different experience. I love getting the chance to meet different people and the chance to ride so many different horses. I also love the shopping, my favorite would have to be Justin Boot factory and Paul Taylors. It is going to be a great time and I can't wait to go and share this experience with the team.

**Hi I'm Maddison Lane from NSW** and I have been around horses my whole life but starting riding when I was six. I started at Pony Club and that is where I gained a lot of my knowledge and skills. In 2009 I got involved with Paint Horses and found my love for them and the Western



events and have not looked back. My current competition horse is a buckskin Paint "Nothing Too Serious" known as Murphy. He has given me an enormous boost, teaching me new skills all the time and I'm sure he will take me even further and make me a better rider. I am also currently training a 3 year old solid Paint "Nash" he is coming along very well and this year will be his first show season.

I love all the classes that go with the Paint Horses, but if I had to choose I would pick Hunt Seat Equitation because of my English background. I find it challenging for horse and rider as the pattern needs to be precise. When I go to Texas I am looking forward to riding different horses and making new friends along with seeing some of the best Paint Horses in the world. For the PHAA Youth of Australia, going to America is an opportunity of a lifetime and it gives you huge amounts of experience that you can bring back to use and share.



**Hi I'm Emlyn Broad from Queensland,** I grew up with horses but I didn't have the opportunity to show till age nine. Since then I have ridden quite a few horses and

learnt as much as I can from different trainers and different disciplines. My current horse is Buddy 'KRS Beggar Joe'. I love him to pieces. He is more than just a horse to me, he is my best friend. Buddy and I have been a team now for three years. We have competed at State and National level twice now taking out



Junior Youth High Point of Australia 2011, Junior Youth High Point of Queensland 2010, 2011, and other numerous awards. He has taught me patience and how to understand my horse, which then can be used when I am training.

My favourite classes by far, are Showmanship and Western Horsemanship, both classes are judged on the handler and how you manoeuvre your way around the pattern with your horse. I never imagined I would have the opportunity to visit let alone compete in Texas. I can't wait to check out their horses, their training techniques and the facilities. I hope to make

new friends and bring home lots of new ideas which I can use and share. What a great incentive for younger kids showing their Paints ... to have the opportunity to attend the World Paint Show. Yee ha.



last two years. I have a horse name Rosewood Kid Of Rock aka Elvis which I love,

**Hi I'm Nicole Lindeberg from Queensland**

and I have been riding since I was 5 years old but I have only gotten competitive in the

he is a great partner. We are a fun team, you can always see us having a good time together, it doesn't matter if we are training, showing or just hanging out on the trails.

My favorite events are Western Pleasure and English, I absolutely love it and I always have a great time in all my events just knowing I'm out there having ago. I am mostly looking forward to going to the ranches and just experiencing the opportunity to compete at the world games. I think it's an amazing idea to send a Youth Team to the World Games as it gives any youth something to strive for.



# PHANZ 2012 YOUTH TEAM

**In 2012 we welcome back a new, New Zealand Youth Team to compete at our National Show. They will be here for the whole show and compete in the Youths Team Challenge along with some open Youth classes. We will hold a number of social events throughout the National show to give everyone a chance to mix and make new friends.**

We thought it would be a great idea to give you a run down on the New Zealand Team so you can recognise them when you see them, as we are sure you will all make them feel very welcome with that great Aussie spirit.

The Youth Teams Challenge will be a friendly competition between Australian and the New Zealand Teams and if you would like more information on it please contact Craig Dengate. All of the New Zealand Team will ride borrowed horses and we would like to thank those owners that have kindly donated the use of their horse for this purpose. We wish everyone good luck but most of all we hope everyone has a great time and makes some new friends.

## Meet – KURT MELLING –



his an 18 year old builder from Warkworth, Northland. He has ridden Western for three years and currently rides a Paint Horse called Double Exposure and a QH called Lean On Me. His favorite events are trail and reining

and he is looking forward to giving the Aussies a run for their money in the Team Challenge.

## Meet – ELLEN OSBORNE –



she is a 16 year old student from Matamata, Waikato. She enjoys horse riding for the challenge of working with something that can think for itself. Her western horse is My Little Spin and she also rides English on her Paint Horse Dr Pepper. Her biggest achievement to date is being selected to ride in the New Zealand team at the 2012 AQHA Youth World Cup. At Trans-Tasman she would like to learn heaps, have fun and beat the Aussies.

## Meet – LINDSEY OSBORNE –



she is a 14 year old student from Matamata, Waikato. She enjoys all types of riding and especially enjoys the reward of working with young horses. Her favorite guy is her eight year Paint/QH

Double Doc Sox and this season is also riding a four year mare called Silverados Indian Summer. She is really looking forward to riding with the Aussie's again.

## Meet – CLAIRE SMITH –



she is 14 years old and comes from Hororata, Christchurch. She enjoys all types of riding. She competes at western on Miss Magic Lee, and also does English and the 'Cowboy Challenge' on her spotty pony Joe Calico. She is really looking forward to riding in Australia for the different competition and horses.

## Meet – ANALYSE BLYDE –



she is the New Zealand Team's reserve rider. She is 15 years old and lives in Wellsford, Northland. She enjoys riding western on her Paint Horse Diamond B Gunna Bee and her favorite classes are trail and



pleasure. She is really looking forward to the Aussie Nationals and having a good time with the team.

#### Meet – TANIA MAPP –



she is the New Zealand team coach. She lives on Lochinvar Station, Taupo where she is a mum/horsetrainer/farmer/wife. Her biggest achievement to date is her successes she has had

with Cotton Oak and Lucky Invitation receiving high point AQHA all round horse awards. At Trans-Tasman she would like to help her team improve their skills and horsemanship so it can be put to use at the show.

## –RIDE AUSTRALIA–

NAME	ACHIEVEMENT	DATE
Just Plain Cool	50 Hours	29/04/11
Just Plain Cool	100 Hours	23/11/11
Western By Demand	500 Hours	18/05/11
Blue Mtn Heza Clever Copy	100 Hours	20/05/11
Docs Dirty Dancer	50 Hours	22/08/11
Tribidation	50 Hours	30/08/11
Tribidation	100 Hours	14/12/11
Fancy No Frills	50 Hours	25/08/11
Hot Tuxedo Man	50 Hours	31/08/11
A Shamefull Dream	100 Hours	11/09/11
Shamefully Hot Lover	50 Hours	29/03/11
Shamefully Hot Lover	100 Hours	9/11/11

+NEWS++NEWS++NEWS++NEWS++NEWS++NEWS++NEWS++NEWS++NEWS++NEWS++NEWS++NEWS++

### DEAR EDITOR,

2011 saw my return to regular showing for some 6 years. I was quite anxious and as some witnessed, unprepared, but Smidgin (Win-Rose'e The Apprentice) and I had an absolute blast! The 2011 PHAA National Show and the 2011 QLD State Show were so much fun! I can honestly say, I don't think I have ever had so much fun riding a reining pattern ... "Go Maz" lol. The people were so lovely and supportive, it certainly made me "catch the bug" again ... BIG TIME.

I would like to take this opportunity to thank all the Queens-landers I have been showing with, you are like my family away from home. Thanks to the clubs who are putting on such amazing shows, thanks to my parents for looking after my kids whilst I do what I love in the arena and to Megan and Grahme Savill, thanks for lending me all of your equipment and hats, taking me in and making sure I am fed and most of all, for your friendship. All of my love and best wishes to you both for the safe arrival of "Baby Savill".

I hope everyone has a stella 2012! Enjoy your horses guys ... I forgot how much I needed them for a while. Sometimes we need them, far more, than they need us.

Lisa Day xx

### 2012 TRANS TASMAN YOUTH CHALLENGE

PHAA National Show, Aelec Complex Tamworth NSW

**To all Youth here is an opportunity for you to compete in the 2012 Trans Tasman Youth Challenge. We have a dedicated New Zealand Youth Team travelling across the Tasman to compete.**

The team is to consist of 4 riders, one horse, one rider basis. A team of three riders will be accepted. The events which form the Youth teams challenge are:

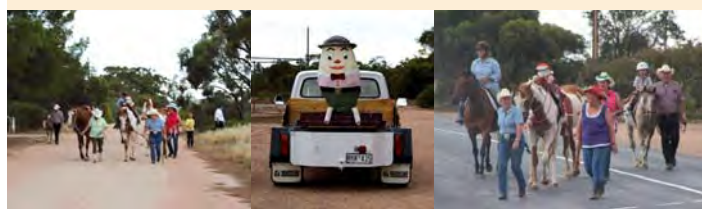
**Showmanship, English Equitation,  
Western Horsemanship,  
Trail, Teams Relay, Youth Teams Ride**

(Teams will be based on a State Of Origin Basis, if you have trouble getting a team together contact Craig Dengate. Team entries must be submitted with National Show Entries). A nomination of \$50.00 per team is required and point scoring will be based on PHAA rule 219. Presentation of placegetters will be held at the High Point Presentation Dinner at the PHAA National Show. For further information please contact: Craig Dengate [craigadengate@bigpond.com](mailto:craigadengate@bigpond.com) or Lee Wear [paint.girl@live.com](mailto:paint.girl@live.com)

### PAINT HORSE SOCIETY OF SA INC. at the Owen Christmas Pageant

The club has recently acquired the use of Owen Oval as it's home ground and as thanks to the community felt it only fitting that we show our true colours and take part in the town's Christmas Parade. Paint Horse Society of SA Inc is holding monthly training days at the oval to help newcomers and new horses learn the western events. We have only been using the oval for a couple of months and already attendances are increasing. The Christmas Parade was all a bit of a last minute rush and held on Christmas Eve. We are convinced we will have greater numbers in 2012. The towns folk thought it a nice idea if the horses followed the amusing paper mache Humpty Dumpty.

Regards  
Barb Gurner  
Newsletter Editor/Webmaster/Treasurer PHSSA Inc.



+NEWS++NEWS++NEWS++NEWS++NEWS++NEWS++NEWS++NEWS++NEWS++NEWS++NEWS++NEWS++

## AWARDS PRESENTATION FOR 2009/2010 HIGH POINT AWARDS OFFICIAL PRESENTATION OF HALL OF FAME INDUCTEES 2011

SATURDAY 28 APRIL, 2012  
ALLENDALE MOTOR INN  
3.30 PM START

To all members that are eligible to receive High Point Year End Honor Roll Awards from the 2009/2010 Honour Roll Year a presentation afternoon has been set down for 3.30pm at the Allendale Motor Inn Function Centre, Cnr New England Highway and Burgmann's Lane TAMWORTH NSW which is approximately 2kms from AELEC.

The 2012 Annual General Meeting will follow after starting at 5pm. Any members with questions may contact Craig Dengate: [craigadengate@bigpond.com](mailto:craigadengate@bigpond.com)

## THANK YOU TO THE MEMBERS THAT HAVE ASSISTED IN PROVIDING HORSES FOR THE 2012 TRANS TASMAN YOUTH CHALLENGE

Wendy McNeil  
Belinda Richardson,  
Lee Wear  
Annette Pretty  
Michelle Bruce

Horses will compete in:  
Showmanship  
English Equitation  
Western Horsemanship  
Trail  
Youth Teams Ride

## ANNUAL GENERAL MEETING

Alendale Motor Inn and Function Centre  
Cnr New England Highway and Burgmann's Lane Tamworth NSW  
SATURDAY 28 April, 2012 5.00 PM

### AGENDA

1. Approval of the Minutes of the previous Annual General Meeting
2. Receive and consider the written report from the President
3. Receive and consider the Financial Statements
4. Consideration of Notices of Motion
5. Notification of election of Board of Directors
6. Appointment of Auditor (if required)
- hort Break, light refreshments provided*
7. Presentation of 2010/2011 End of Year High Point Awards.
8. Presentation of Hall OF Fame Inductees 2012

Please note for your convenience a courtesy bus will be provided by the PHAA at no cost to transport you to and from the Alendale Motor Inn to AELEC

If you would like to stay on after the official activities for dinner the Alendale Motor Inn have a licensed restaurant.

## PHAA YOUTH GOODS AND SERVICES AUCTION

Conducted at the 2012 PHAA National Show Aelec Tamworth

**Be a part of one of the most enjoyable events at the PHAA National Show and help our Youth travel to Fort Worth Texas for the 2012 Youth World Games.**

On occasion this goods and services auction has helped raise \$6000.00 towards the Youth Portfolio or the Youth Team Trip. Every bit counts, if you have any goods or services in all shapes and sizes to donate, please bring them along to the Youth Goods and Services Auction Night.

Please contact Craig Dengate [craigadengate@bigpond.com](mailto:craigadengate@bigpond.com) or Lee Wear [paint.girl@live.com](mailto:paint.girl@live.com) if you can assist or we can assist you getting items to the auction.

## SHOWING OF UNREGISTERED HORSES

In the past we have become aware that some of our members have shown unregistered horses at PHAA approved shows in registered Paint Horse classes.

### Rule 210 showing of unregistered horses

All horses entered into Paint Horse or Paint Bred classes at PHAA approved shows must have had their PHAA registration completed and a registration number issued by the PHAA office. A horse is not considered to be registered until such time as the registration is entered onto the stud book records of the PHAA and the registration number has been issued by the PHAA.

Those PHAA members showing unregistered horses in registered Paint Horse and or Paint Bred classes at an approved PHAA show will be notified by the PHAA of the said offence, allowing twenty one (21) days for reply.

If in fact an unregistered horse was shown in an approved show in Paint horse or Paint Bred classes, the exhibitor and or owner may be suspended for a period of not less than thirty (30) days. Upon receipt of \$25.00 the suspension will be lifted at the duration of the 30 days. Failure to pay the \$25.00 in order to remove the name from the suspension list may result in the suspension period being extended.

The appearance of an unregistered horse in a Paint Horse or Paint Bred class will not have cause for the loss of any show points earned by registered horses. The number in the class will be as per the number of registered paint horses.

Disciplinary action may be taken on any members showing an unregistered horse in a Paint Horse or Paint Bred class at a PHAA approved show.

### PLEASE NOTE:

*The last thing the PHAA wants to do is to suspend members, we are in the business of promoting the participation and enjoyment of our Association. The PHAA rules are there to administer controlled competition so that members can be comfortable within the competition that they compete. Please take the time to think about following our rules and I am sure this will lead to you the members enjoyment.*



# National Show Report



Helen Bentley

The completely revamped entry forms are available on the PHAA Website now. Entries close Friday 30th March. Please make sure if you are emailing your entries in to send it to the email address [nationalshowentries@painthorse.com.au](mailto:nationalshowentries@painthorse.com.au) and for other enquiries or to sponsor, email [nationalshowinfo@painthorse.com.au](mailto:nationalshowinfo@painthorse.com.au). The organising of the show from start to finish is a mammoth task & I'd like to thank everyone involved with this process. The show just doesn't happen by itself.

There are a few new events this year, one being the Team Sorting. Dawn O'Reilly from Sunrise Cutting Horses has been a great help with having this cattle class included and it is hoped that the cattle classes can gradually be expanded. Dawn has sponsored three buckles for the members of the winning team and will be running a Youth Clinic in the Campdraft area as well. Information on Team Sorting is included in this Journal and on the website.

PHAA Promotional items will be for sale at the show. There will be a limited range of items including Jackets, Caps, Polo Shirts and Beanies to combat the cold. If your size isn't available paid orders can be taken. Our aim is to provide quality items at an affordable price so I suggest getting in early before it all sells out.

The Amateur Fashion Parade will be a great opportunity to relax and have some fun. The bar will be open so set aside the Friday night for a good time. Stall holders will be able to have pieces of clothing showcased so contact Shirley Sommer, her details are in the front of this magazine, if you are interested in being involved.

2012 is a year for the Youth World Games to be held at the APHA World Show in Fort Worth Texas. Our Youth Team will be holding a Goods Auction at the show so any items donated for this would be much appreciated. The Youth Teams Challenge is on again this year. The Youth Team Ride and the Youth Team Relay are part of the Teams Challenge. The Team Ride is a choreographed ride to music put together by the team members and the Team Relay is a fun event done on foot without a horse. The Relay is also open to other teams of youth not competing in the challenge.

Sponsorship is being sort for the show & anyone wishing to sponsor a class, garlands or donate goods is welcome to contact myself or Malcolm Hume. All sponsors will be acknowledged in the show program, Paint Horse Journal, PHAA Website and social media.

Lets have a great show and I'll see you there.

**Helen Bentley**  
Vice President

## Affiliated Clubs

### NSW

#### NEW SOUTH WALES PAINT HORSE ASSOCIATION (NSWPHA)

Secretary – Diana Perkins  
80 Arina Rd, BARGO NSW 2574  
Phone: 02 4684 3629  
Email: [secretary@nswpha.com.au](mailto:secretary@nswpha.com.au)  
Website: [www.nswpha.com.au](http://www.nswpha.com.au)

#### EAST COAST APPALOOSA PAINT WESTERN PERFORMANCE ASSOCIATION INC (ECAP&WPA)

Treasurer – Meghan Hennessy  
PO BOX 10, WAUCHOPE NSW 2446  
Phone: 02 6587 1228  
Email: [ecapwpa@yahoo.com.au](mailto:ecapwpa@yahoo.com.au) or [threestartud@bigpond.com](mailto:threestartud@bigpond.com)  
Website: [www.ecwpc.com](http://www.ecwpc.com)

#### AMERICAN PAINT HORSE ASSN CLUB OF AUSTRALIA

Show Secretary – Lee Ann Hall  
611 Lagoon Creek Road, DUBBO NSW 2830  
Phone: 02 6887 2280  
Email: [Jeffrey.hall@bigpond.com](mailto:Jeffrey.hall@bigpond.com)

### QLD

#### SOUTH BURNETT WESTERN PERFORMANCE CLUB (SBWPC)

Show Secretary – Sarah Saxer  
PO Box 284, NANANGO QLD 4615  
Phone: 0419 631 025  
Email: [sarah@wyndhamstud.com](mailto:sarah@wyndhamstud.com)  
Website: [www.sbwpc.webs.com](http://www.sbwpc.webs.com)

#### SOUTH EAST QUEENSLAND PAINT HORSE CLUB INC (SEQPHA)

Secretary – Helen Bentley  
746 Bald Knob Rd, MALENY QLD 4552  
Phone: 07 5494 1071  
Email: [megs\\_j@bigpond.net.au](mailto:megs_j@bigpond.net.au)  
Website: [www.seqphc-inc.com](http://www.seqphc-inc.com)

#### MARYBOROUGH & DISTRICT WESTERN PERFORMANCE CLUB (M&DWPC)

Show Secretary – Kerryn Ferguson  
196 Weir Rd, MAGNOLIA QLD 4650  
Mob: 0429 032 366  
Email: [showsecretary@mdwpc.org](mailto:showsecretary@mdwpc.org)  
Website: [www.mdwpc.org](http://www.mdwpc.org)

### VIC

#### VICTORIAN PAINT HORSE ASSOCIATION INC (VPHA)

Secretary – Karen McCormick  
1/14-17 Hogan Court, PAKENHAM VIC 3810  
Phone: 03 5940 2868 BH or 0425 779 776 AH  
Email: [vpha@live.com.au](mailto:vpha@live.com.au)  
Website: [www.vpha.com.au](http://www.vpha.com.au)

### SA

#### PAINT HORSE SOCIETY OF SOUTH AUSTRALIA INC (PHSSA)

Secretary – Helen Watson  
PO Box 462, BALAKLAVA SA 5164  
Phone: 0417 080 422  
Email: [hawatson1@bigpond.com](mailto:hawatson1@bigpond.com)  
Website: [painthorsesa.webs.com](http://painthorsesa.webs.com)

### WA

#### STATEWIDE PAINT HORSE ASSN OF WA INC (SWPHA WA)

Secretary – Tracey Whitton  
PO Box 354, SEPENTINE WA 6125  
Phone: 0417 940 957  
Email: [ficc@optusnet.com.au](mailto:ficc@optusnet.com.au)  
Website: [www.freewebs.com/paintswa](http://www.freewebs.com/paintswa)

### TAS

#### PERFORMANCE PAINT HORSE ASSN OF TASMANIA INC (PPHAT)

Secretary – Vicki Hume  
91 Valley Road, SIDMOUTH TAS 7270  
Phone: 03 6383 1176  
Email: [layton.valley@bigpond.com](mailto:layton.valley@bigpond.com)  
Website: [www.painthorsetasmania.com](http://www.painthorsetasmania.com)

### OTHER BODIES

#### HSA

Linda Gray  
347 Newland Rd, WAMURAN QLD 4512  
Phone: 07 5429 8789  
Mobile: 0412 479 340  
Email: [gm8@bigpond.com](mailto:gm8@bigpond.com)

#### AMERICAN PAINT HORSE ASSOCIATION

PO Box 961023  
FORT WORTH TEXAS 76161 USA  
Phone: (817) 834 2742  
Fax: (817) 222 8466  
Website: [www.apha.com](http://www.apha.com)

# Discussion for a Proposed Rule Change

## for Registration of Colts

For many years the Board of Directors have had to address the complaints and problems associated with Stallions being bred before they have been upgraded for breeding purposes as per Rule 112. The Association has sympathy for unsuspecting buyers who purchase progeny by these stallions. These people are faced with joining the PHAA in asking stallion owners to comply with the rules and pay all the fees due enabling their registrations to be completed.

A penalty fee of \$2000 was implemented if mares were bred before the stallion was upgraded, to encourage stallion owners to pay the upgrade fee before breeding. Some stallion owners have been uncontactable or refused to pay the fees. At times owners of the progeny of non-upgraded stallions have paid the penalty fee to gain registration papers and others unable to afford the fee have ended with an unregistrable foal and a bad taste in their mouth. It doesn't seem fair that innocent buyers are disadvantaged by unsound business practices or just plain slackness on behalf of the stallion owner. It's easy to say buyer beware but the PHAA still has difficulty educating the non-members most vulnerable. PHAA Buyer Guidelines are available outlining all the

paperwork that is needed for the process to go smoothly but still this unfortunate situation arises. In light of this it was suggested to change our fee structure. The fees and process of registering a filly or gelding would stay the same. The proposal is to raise the registration of colts to \$300 plus DNA fee, no more to pay! No more upgrade fee of \$500 no more penalty fee of \$2000.

This fee structure could encourage more people to geld their young colts increasing the weanling gelding numbers in classes as there is a big difference between paying \$80 to register your gelding or pay \$410 to register your colt. The overall quality of colts kept entire would increase but it is not so expensive that someone wouldn't pay the money to register their foal as a colt if undecided as to keep the foal as a future stallion. The PHAA would be getting the breeding fee paid in advance.

The PHAA may not adopt this proposal but is interested in generating some discussion. Details of the Association still requiring a vet certificate verifying height & no hereditary defects would also need to be considered. Member feedback would be appreciated.

## Immediate and proposed Rule Changes

### Proposed Rule Changes

Comment is invited from members on the following proposed rule changes. All comments and feedback received will be considered by the Board prior to ratifying, amending or rejecting all proposed rule changes. This will occur at the last meeting prior to the 1st August, 2012.

If ratified by the Board, these rule changes will become effective from 1st August, 2012.

**Rule 11 to be amended** to replace the words "It will be mandatory" with "It is strongly recommended".

### Add to Rule 11 the following

(a) The PHAA may conduct random drug tests at PHAA approved shows.

Rule changes proposed at BOD meeting October, 2011.

### Amend Rule 237 Amateur Activity Program

Rule 237 paragraph one.

Delete:

"All horses shown in amateur classes must be registered with PHAA in order to obtain association points and awards effective 29.08.04. The horse or horses used by an amateur participant must be owned or leased and registered wholly or in part by the participant and their name must appear on the horses registration certificate."

### and replace with the following wording:

"... in order to receive association points and awards. The horse or horses exhibited by an Amateur in Amateur Owner (including Novice and Masters) or Open classes, must be owned or leased by the contestant or by contestant's spouse, parents, de-facto partner, child of the family, grandparents, brother(s) or sister(s).

Horses owned by anyone other than listed above, do not fulfil the ownership requirements under the PHAA Amateur rule."

*That is, new paragraph one to read:*

"Only current financial members are eligible for PHAA amateur status. All exhibitors in amateur classes are required to hold a PHAA amateur card. All horses shown in amateur classes must be registered with the PHAA in order to obtain association points and awards. The horse or horses exhibited by an Amateur in Amateur Owner (including Novice & Masters) or Open classes, must be owned or leased by the contestant or by contestant's spouse, parents, de-facto partner, child of the family, grandparents, brother(s) or sister(s). Horses owned by anyone other than listed above, do not fulfil the ownership requirements under the PHAA Amateur rule."

### Replace Amateur Qualification Rule 2. (iii) with the following:

"237 -

2 iii) Prize money is not considered remuneration. Payment of entry fees and expenses, by any person other than the person's spouse, parents, de-facto partner, child of the family, grandparents, brother(s), sister (s) shall be considered remuneration."

*Add to end of 237 (f)*

"However Amateur Owners in the same family may individually accumulate points on the same horse, provided points are individually tabulated on a one horse/one rider combination. No horse is to be shown by more than one contestant in any one class.

*Add to end of Rule 237*

237 "(j) Sponsorship may be received by Amateur Owners, providing only goods are received and not monetary payments.



Amateurs may be required to submit details of sponsorship to the PHAA upon request, and must be provided within 10 business days.

(k) Any member ceasing to be a professional with the aim of applying to become an Amateur Owner, must notify the PHAA in writing of the date of ceasing professional activities as soon as practical, in order to qualify for Amateur status."

#### **Further amendment proposed 7th feb 2012 BOD Meeting**

(l) In Amateur Owner Halter competition, when an Amateur exhibitor has qualified more than one horse for Champion and Reserve Champion, only another Amateur may assist that exhibitor as long as the Amateur who originally qualified the horses, leads one (l) of the horses in that class.

*(explanation: This now allows both qualifying horses owned by one Amateur to show for Champion and Reserve Champion)*

*Explanation: These amendments to Rule 237 are being proposed on behalf of the Queensland AO members as a result of a unanimous motion from that meeting. There are several different 'models for changes to PHAA AO rules being proposed (refer Sept 2011 PHJ). They are being proposed to remove anomalies in our current rules and more closely align them with the rules of other associations. All AO's are invited to provide feedback on these proposed changes.*

#### **Rule 103 Colour Requirements Paint Horse Reference Lines**

i) Amend Reference Line 2 to read. A level line around the leg at the centre of the knee [the centre of the knee is determined by using the bony protrusion on the back of the knee as the starting point and drawing a level line horizontally around the knee]

*Explanation: Currently the reference line of the knee is at the top of the knee joint. This Rule change is to revert back to the original reference line at the centre of the knee used by the Association for nearly*

*30 years prior to the current reference line 2. More horses will qualify for registration & the reference line 2 would then mirror the reference line of the knee used by the APHA. At the moment a horse can be eligible for Regular registration with the APHA & be only eligible for the Paint Bred Registry with the PHAA.*

#### **Amend Rule 115 Listing Of AQHA & Australian Stud Book Registered Horses:**

(a) Stallions registered with the ASB & AQHA, must be listed with the PHAA prior to breeding. Stallions registered with the AmQHA or other Association recognised by the AmQHA are required to be listed with the PHAA prior to the registration of their foals.

From 1st August 2012 a penalty fee of \$50 will be imposed on QH & ASB stallions not listed with the PHAA prior to breeding.

*Explanation: The PHAA require all Quarter Horse and Australian Stud Book Registered Horse to be listed. Over the past years the PHAA have received registration applications for horses Sired by Quarter Horses and Australian Stud Book Registered Horses that have not been listed with the PHAA. To assist with the efficient administration of Registration Applications (having the appropriate information for the Sire on file) The Stallion Owners who do not do the right thing will incur a penalty fee. This penalty fee would compensate the PHAA Office for time and effort needed to obtain the information required.*

#### **Immediate rule change Rule 112 add**

(f) When a registered AQHA or ASB stallion is eligible for dual registration with the PHAA it need not be upgraded for breeding purposes with the PHAA but must be listed with the Association prior to breeding.

*Explanation: A listed QH or ASB stallion satisfies the bloodline requirement for its resulting progeny to be eligible for registration [provided the Dam meets the bloodline requirement]. It is therefore not necessary for the stallion if it is dual Registered QH, ASB to use its Paint Horse registration to register its Paint Horse progeny.*

## **Friendly reminders from the office**

- As of the 1st of January 2012 all mares must be DNA Typed (upgraded) before they are used for breeding.
- If you are faxing or emailing a registration application your application cannot be processed until we have received the original pink service certificate.
- If emailing photographs for registrations, transfers or upgrades please write the

- horses registered name or 1st name choice in the subject line. You could also rename each photo with the horses name to ensure that your photos are easily identified. If your photos are bouncing back to you it may mean that they are too big.
- Don't forget to include colour test results when registering horse of the following colours; Smoky Black, Smoky

Cream, Champagne, Pearl & Silver dapple.

- Breeding reports are due by the 30th of June after each breeding season. Late breeding reports will attract a \$50.00 penalty fee per mare.
- Final Futurity payments are due by the 30th of March 2012.

**From the PHAA office Team**

#### **REMINDER:**



#### **112 UPGRADE FOR BREEDING PURPOSES**

(a) All filly foals born from 1st August 1999 must be parentage DNA tested before the filly's progeny can be registered with the PHAA. A veterinarian may attend to collection of the hair sample or the owner agent provided the owner/agent completes a statutory declaration in respect of the identification of the filly/mare.

(b) Fillies/mares will require;

- i) As from 1st January, 2012 parentage DNA testing to be completed and on PHAA file prior to being bred. A penalty fee shall apply to mares which are bred without parentage DNA results on file with the PHAA. Penalty fee will be \$50 per mare.

# WORMING NEW STRATEGIES

Article: JOHN KOHNKE

**Dr. Craig Reinemeyer of East Tennessee, USA, presented a paper at the 55th Convention of the American Assoc. of Equine Practitioners held in Las Vegas in December 2009. He presented a new approach to controlling Small Strongyle (Small Redworm) infestations in horses, subtitled 'A Mandate for Change'.**

His 'mandate' emphasises prevention and sustainability of control, rather than relying on chemical control with worming compounds alone. Many of the recommendations are based on already known data on worm lifecycles, egg hatching times and environmental factors which favour worm egg survival. Many horse owners are influenced by the commercial promotion of worming at regular set intervals and claims that worming alone will control worms. Currently, there are only 3 classes of worming compounds available and all are under threat of increasing resistance build-up due to over-use or poor dosing techniques. Widespread use of 'mectin' compounds and with no new, different acting compounds that are likely to become available, even in the long term because of the cost for Research and Development for wormers, the trend is an increased likelihood of large scale wormer resistance unless new strategies are adopted to better target and control worm populations in the environment and within horses.

## Facts and Stats

- Studies have shown that 99% of Strongyle spp worms are in the pasture phase of their lifecycle, with only 1% of the worm population infecting the horse, at any one time.
- Pasture contamination with infective stage larvae increases by 300% after rain on a contaminated pasture.
- Studies have also shown that egg hatching and larval development of Strongyle eggs is hampered by temperatures below 10°C and above 35°C, with optimum hatching speed at around 25-30°C in spring and autumn seasonal conditions. Highest infective larval populations on pasture thus occur during temperate seasonal conditions in spring and autumn.
- Infective Strongyle spp larvae can remain viable for 6 months in the protected micro-environment of the pasture base during damp, warm conditions and for up to 5 weeks under snow! Roundworm eggs can remain viable for up to 5 years in manure under sheltered areas, such as trees and in shaded, frost free moist areas.

- A combined pasture hygiene program to limit egg and larval contamination with strategic worming based on seasonal conditions, is from 5 to 10 times more effective in controlling worms than worming alone.

Resistance build-up by Small Strongyles (Small Redworms or Cyathostomes) against B-Z wormers is well known and there is now an emerging risk of resistance against the 'mectin' worming compounds. If resistance is allowed to build up against these compounds, then there will be very few alternative compounds which are effective against these worms. Wormer rotation is already limited, and will be more seriously hampered in the near future, because the lack of new compounds. Recent surveys suggest developing Ascarid spp (Large Roundworm) resistance in foals to ivermectin in the USA and Europe, and local evidence that Oxyuris spp (Pinworms) may be developing resistance to older 'mectin' compounds as well.

Dr. Reinemeyer's 'mandate for change' includes a detailed discussion on egg hatching times, seasonal and lifecycle variations and tests for wormer efficiency by Faecal Egg Count Reduction Testing (FECRT). Worm egg counts in manure are recommended in horses over 3 years of age and between 6-12 weeks after the previous worming, relative to the wormer used (ivermectin and moxidectin 10-12 weeks after their last use).

## A new strategy for worm control recommends the following ...

1. Worm out relative to the age and individual horses within a group
2. Up to 50% of horses show some resistance to worms and continued worming may actually reduce this natural protective mechanism. Do not worm these horses so often – monitor by 3-4 monthly FECRT.
3. Do not worm out a horse too frequently and avoid worming at set intervals (eg every 6-8 weeks) throughout the whole year. Worm relative to seasonal risk of



worm uptake and burdens in grazing horses.

4. Target worm control in young and old horses, based on age and FECRT.
5. Worm relative to seasonal transmission and pasture contamination rates. This may only require worming at 3-4 month intervals to gain control and reduce risk of wormer resistance.
6. Rotate to an older wormer for general non-seasonal control, leaving the 'mectins' for targeted control.
7. Perform FECRT by collecting manure for worm egg counts and segregate horses into low risk and high contamination relative to pasture conditions and manure egg count results.

Reference: C. Reinemeyer (2009) AAEP Convention 55: 352-360

It is important to ensure accurate body weight estimation and efficient paste worming techniques when administering all types of wormers. Up to 80% of horse-owners under-estimate their horse's body weight by up to 15% when calculating a wormer dose and on average, 10% of the wormer dose is wasted by poor worming techniques when administering a paste wormer.



# HOBBY HORSE'S 2012 WESTERN FASHION FORECAST

By Suzanne Vlietstra    Photos by Hobby Horse Clothing Co., Inc.

**It's 2012 – have you set New Year's goals for you and your horse? If success at horse shows is a goal, part of achieving those winning moments will include planning your presentation to create a winning impression. Let's talk about what's new and important this year in western show apparel and tack.**

First, let's consider the show scene: due to the recent poor economy, entries at all but the very largest national shows have softened. Innovative local shows that offer plenty of walk-trot and jackpot classes seem to be holding their own, but regional shows that don't bestow national titles or offer lots of fun events and cash-back classes are struggling. For the average show rider – a midlife woman who works – it's becoming easier to pick and choose shows that fit our budgets, not our egos. So planning our tack and apparel purchases is guided by both where we show and by our pocketbooks. Advance planning in both areas can help make your 2012 show goals a reality.

For the lady show rider, 2012 brings more color and variety in the show ring, a bit of playful fun with accessories, and more interest than ever in comfort in the saddle. The phenomenon of older-and-wider-riders will continue to influence show tack and apparel fashions for years to come with continuing emphasis on quality equipment that offers style and value, and is comfortable to use.

Let's take western show apparel trends from the top, starting with hats. Western show hats continue to be the billboard that creates a frame for your face, so finding a hat that's comfortable and flattering is paramount. Quality felts can be gently shaped to emphasize your face shape; they'll need a tune up at the beginning of each season. Hat shapes continue to be square or semi-square along the brim front, with the brim sides rising steeper than in years past. Black hat with black chaps almost always works; neutral felts like platinum and sand are also versatile



An important new look is show tops with sheer sleeves. Here, glittery black chiffon sleeves add drama to Hobby Horse's Sterling Grande Limited Edition Breezy tunic in a versatile black and silver color theme.

and add light around your face. White hats are a fashion statement that can add pizzazz to your outfit; plan

on replacing them each season as they yellow with exposure to air.

Your show top- whether a blouse, tunic, rail shirt, or vest set – sets the pace for your presentation. It should fit trim and smooth with sleeves long enough to cover your wrist bones as you ride. Most show tops are worn tails-out these days, which is very comfortable but can create the illusion of thickness at the waist. If you tuck your top in, be sure your belt and buckle coordinate with the outfit and fit smoothly.

In tops, think about being 'on stage' with your primary colors in the top coordinating with your saddle blanket and horse to create a theatrical look that makes a dazzling impression from across the arena. Trims on tops should follow vertical lines to suggest a tall, slim figure, with confident use of appliqué, crystals, and metallic fabrics bring extra drama to your presentation.

Fabrics for show tops range from basic black stretch to heavily embroidered taffetas, but today's winning looks are all about embellishment: bold, layered, colorful, and reflective with nailheads, rhinestones, metallic inks and overlay fabrics, and very elaborate designs. While some



Cool, comfortable show tops in beautiful fabrics take the prize in 2011. Hobby Horse's Horizon Limited Edition tunic pairs bold color with slenderizing vertical lines of sequins and faux crystal trims.

fabrics stretch and some do not, a trim silhouette is paramount for a correct show appearance.



Custom show tops in the arena this year will be genuine works of art, and their prices – often thousands of dollars – will reflect their unique attributes. If you're crafty, consider embellishing a basic top with crystals and appliqué to make your own one-of-a-kind creation for far less. Customizing takes time and practice, but if you start with a ready-made top, your creativity can take you to the winner's circle with pride in clothing your own unique apparel.

Welcome back the vest! After years on the sidelines, vests are back in the spotlight this year with a new longer length that covers the rider's chap tops and features a gently squared neckline. Professionally paired with an open-neck crisp cotton blouse and accented with a small scarf at the neck, this hybrid look gives vests a new charm in the show ring, while keeping their comfort and classic western silhouette.

For horsemanship classes, the same starched blouse worn with vests is a new look for equitation stars, though many will still wear fitted stretch tops that have minimal color breaks through the waist area to create an illusion of perfect poise as they ride. Showmanship champs continue to wear suit looks, with elaborate tops (some of which can also be worn riding) paired with fitted show pants.

Those show pants are always trim, and hemmed long enough to touch the handler's boot heels when standing for the judge. Under chaps, wear show pants, simple jeans (no rips/bling/fancy pockets) or stretch riding pants for comfort and a smooth fit in the saddle. Boots only get to peek their toes out from under showmanship pants or chaps, so best to color-coordinate them to their neighboring garment and keep them simple and shined.

Chaps cover half your body when you show, so make sure they fit like those proverbial gloves and that they help you look tall and trim in the saddle. Black chaps with fringed legs are far and away the most common look, but consider some colored chaps for a new look. Chaps should be snug but not tight- if yours are a struggle to put on, zip-in extensions hidden under the fringe lend temporary room if your weight fluctuates.

Colorful clothing is a western tradition that sometimes disappears in a sea of black in the show ring. Clever use of color can bring interest and originality to your show presentation; coordinate your tops and saddle blankets with your horse's primary

coat color for a winning look, but consider adding colored chaps to your wardrobe for versatility and freshness.

Trending colors this year will include jewel-tone shades of turquoise, deep aubergine purple, fuchsia, and indigo blue as great partners with bay, gray, and black horses. Red-based horses including sorrels, chestnuts, and red roans look terrific in sand, chocolate, whiskey and new olive green.

Don't overlook accessories: the finishing touches that bring sparkle and personality to your presentation. Earrings and neckline pieces may be modern crystals



**White hats are a strong look in the show ring because they add light and interest around the rider's face. Here, the Pacifica Limited Edition tunic from Hobby Horse is topped with a winter white felt hat.**



**Reflective fabrics are outstanding in the arena. The Avalanche Limited Edition from Hobby Horse is covered with tiny sequins while the collars and cuffs sport heavy crystal embellishment.**

or traditional conchos, but they all enhance your look and make it uniquely yours. Your hairstyle also makes a style statement and should

be tidy and trim for a day in the saddle. Whether you prefer a ponytail or a bun, add an interesting hair accent like crystal-topped pins, to complete your look.

Show men continue to dress conservatively in starched, fitted traditional shirts worn with small neckties. Matching your shirt color to your solid or patterned saddle blanket makes an instant, easy show set that works in any western event. Add a blazer for halter events and a few colorful small scarves to tie at your neck and you're done shopping for the show season ... if your hat is pricey, perfectly shaped, and in pristine condition, of course!

The best-dressed horses will be wearing beautiful traditional western tack made

from quality leather, hand-tooled and accented with traditional silver this year. We're seeing some darker leather edging into the show pen, which highlights silver nicely and doesn't turn pink in the sun. Saddles have big skirts to show off all that silver, and therefore need big saddle blankets underneath them. Headstalls should be carefully considered to flatter your horse's facial features, and of course all tack must fit horse and rider perfectly to prevent pinching and pitching!

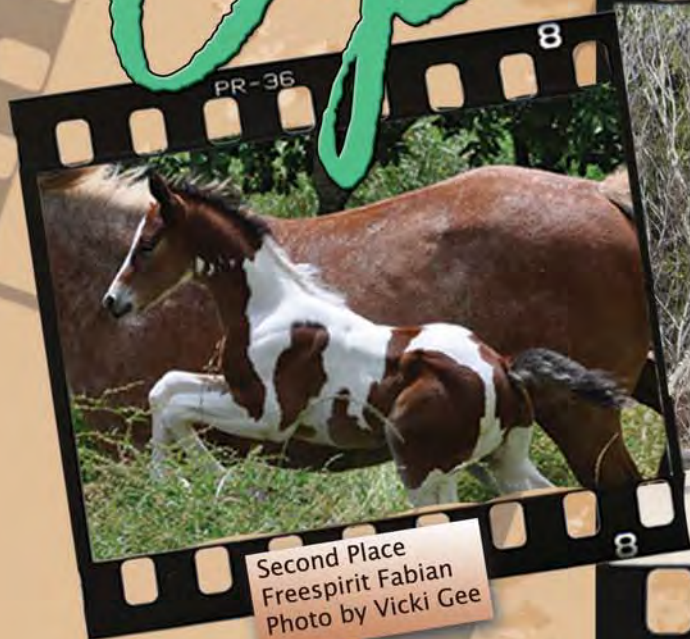
While show ring trends evolve more slowly than street wear, it's important to plan, shop, and invest wisely to stretch your budget and create an impression of quiet confidence in the show ring. Study online blogs and magazine sites, as well as show photographer's proof pages, to see what your competition will be wearing and you'll be ready to win. Invest in the best within your budget to be stylish, confident, and dressed for success in the show ring in 2012.

© 2012 Suzanne Vlietstra. Writing or riding, Suzanne Vlietstra enjoys horses and their people. Vlietstra is president of Hobby Horse Clothing Company, a show apparel manufacturer, and also owns a 50-horse boarding stable.



# PHOTO COMPETITION 2012

## Open Finalists



Second Place  
Freespirit Fabian  
Photo by Vicki Gee



Winner  
Amanda Darach and Smoke N Native Son IMP  
Photo by Katrina Darach



*More stunning images, well done everyone.*





# PHOTO COMPETITION 2012

## Hummerous Finalists

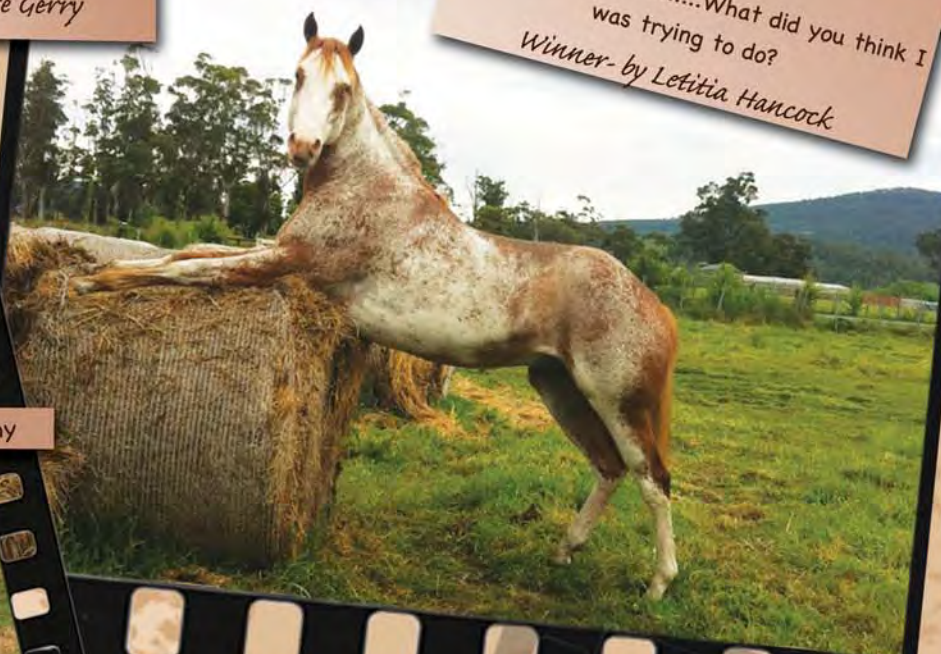
I won it...That makes it mine!!!  
Second - by Claire Gerry



Gee my belly is itchy



"What mum?,  
im just chilling out.....What did you think I  
was trying to do?  
Winner- by Letitia Hancock



What Dish?



You are not a Paint Horse!!!



'Run Forest Run!'



Back...so...Itchy!!!



Where is my Rum & Coke



Now we have your halter  
on the next step is leading.



Elephant...Why me!!





# PHOTO COMPETITION 2012

## Artistic Finalists

Winner -The Eye  
Photo by Katie Corby

Second  
In the Distance  
Photo - Katie Corby

A great job by all entrants.







31st March and 1st April 2012

# Tasmanian Paint Championships



Major Sponsors are:

The Club Hotel  
West Tamar Farm & Feed  
GIST  
PHAA  
Cowboy Bronze  
RnV Horse transport

Other Sponsors are:

Mitavite  
Equilibrium  
Tuffrock  
Horse land  
Horsewear House ACT  
MecWorms  
International Animal Health Products  
John Kohnke  
Supreme Horsewear  
HYBROW Paint & Quarter Horses  
GG Garlands  
Ken Green Equine



Venue is Violet Banks Indoor Arena, Exton near Westbury, Tasmania.

This show is the weekend after the Vic State Show and the week before the South Australian Show making it a perfect Circuit for anyone wishing to compete.

Program will consist of Hunter in Hand and English including Dressage on Saturday commencing at 11:00am, with Halter and Western on Sunday commencing at 9:30am. A copy of the schedule is available on the Approved Show page of the PHAA website. All enquiries to Vicki Hume or visit our website

Vicki Hume 03 6383 1176 or 0417 832 076

Email: layton.valley@bigpond.com

[www.painthorsetasmania.com](http://www.painthorsetasmania.com)

Artwork Tania Hobbs

GIST Buckles and Cowboy Bronze Trophies on offer and heaps of other prizes. We already have substantial interest from exhibitors in SA who are making the circuit trip.



Farm & Feed



## NSW State Show

10th to 13th May 2012 (SIEC)



\$\$\$Prize Money\$\$\$

\$1000 on our Western Pleasure, Hunter Under Saddle & Trail Feature Events

\$500 on our Youth Hunter Under Saddle & Western Pleasure Features

\$500 on our Reining and Hack Challenges

\$\$\$Youth and Paint Bred Jackpot\$\$\$



A new incentive this year thanks to Arthur Hupp and a band of volunteers for cleaning stables at last year's show is the Youth and Paint Bred Jackpot. Funds will be split in half. Every Youth competitor and Paint Bred horse will be put into one hat and the selected events into the other, the combination will be drawn.

If that combination won the class they will win the jackpot funds if not it will jackpot to next year's State Show.

If the jackpot goes off the winner will also receive a buckle.

If it doesn't go off the Youth competitor and Paint Bred horse drawn will win a consolation buckle (both buckles sponsored by RD Paints). There will be no extra fee to enter the jackpot.

Please see the website for eligible classes and more information.

Program and entries forms can be downloaded from our website

[www.nswpha.com.au](http://www.nswpha.com.au)



# Willowvale Lodge

## Training Centre



*Willowvale Lodge Training Centre* is set on 52 acres 40 minutes from Brisbane and only 5 minutes from Caboolture Showgrounds making it easy to access. Catering for all disciplines including, Western, English, Cow-horse Events, breaking in, pre-training, problem solving and showing.

Group and private lessons also available.

Phone Kirra and Naish on 0422 338 513  
Email-willowvale.lodge@bigpond.com

**[www.willowvalelodge.com](http://www.willowvalelodge.com)**



# TEAM SORTING

Team Sorting looks to be just as much fun and as challenging as Team Penning can be, sharing a number of similarities. For Team Sorting panels are erected across the arena to divide it in half, with a panel missing to form an entry and exit.

## TEAM SORTING RULES

1. There will be 12 head of cattle, numbered 0 to 9, with 2 spares to hold the mob.
2. 3 riders will enter the arena.
3. The judge will call a number between 0 and 9. Example the judge might call number 7, this will become your first beast.
4. Then you must follow on in order. From the example in point 3, your order will be 7, 8, 9, 0, 1, 2, 3, 4, 5, 6.
5. You must put the cattle through the gate in that order. If the wrong number goes though the gate out of sequence, this will result in disqualification.
6. If a beast with no number gets though the gate, this will result in disqualification.
7. If a beast that has been drafted correctly through the gate, then gets back to the mob, this will result in disqualification.
8. The rider that puts the last beast through the gate will call 'time'.
9. Riders have 2 minutes to complete their run.
10. Running a beast into the fence or over the mob will result in disqualification.
11. Excessive pressure on cattle or horses will result in disqualification.
12. The judge's decision will be absolutely final.
13. If no team gets all the cattle though in the time allocated, places will be determined by the number of cattle they sort in the time allocated.
14. You may run 10 teams with one mob of cattle, and each mob must not run more than 4 times in one day.
15. All riders must adhere to the dress code as follows:
  - a. Long sleeved shirt
  - b. Brimmed or skull cap
  - c. Riding boots
  - d. Tidy attire
  - e. All competitors under 18 years must wear a skull cap. AS3838.



The team of 3 riders finished and leaving the arena by the Out gate. A new team of 3 is entering the arena by the in gate. Other competitors are waiting for the gate keepers to call their teams when it is their turn.



The cattle at the end yard with their numbered collars on ... numbered 0 to 10. (two are not collared and represent 'the herd')



A team sorting their cattle by the numbers on the collars.



Another team sorting their cattle.



The team works together with one person guarding the 'gate' (opening in the panels) to the 2nd yard and only allowing the right numbers thru (wrong numbers or out of sequence numbers thru the gate is a disqualification)

## ENERGEX WESTERN BREEDS CELEBRATION SHOW

**June 24-26th 2012**  
**Entries Close May 25th 2012**

Lockyer Indoor Equestrian Center  
Gatton QLD

**AMERICAN JUDGE  
FUTURITIES & FEATURE EVENTS  
OVER \$10,000 IN CASH & PRIZES**

Programs available from [www.gqhpa.org.au](http://www.gqhpa.org.au)

All enquiries to: Lyn Watt 07 5467 1126



# 2012 NATIONAL



## DAY 1 - SUNDAY 29TH APRIL

### Dressage

1. Dressage 1D
2. Dressage 2C
3. Senior Youth Dressage 1C
4. Junior Youth Dressage 1A
5. Amateur Owner Dressage 1C
6. Paint Bred Dressage 1D
7. Amateur Owner Paint Bred Dressage 1C

### Hacking

8. Led Hack Stallion
9. Led Hack Gelding
10. Led Hack Mare
11. Led Paint Bred Hack
12. Senior Youth Ridden Hack
13. Junior Youth Ridden Hack
14. Amateur Owner Ridden Hack
15. Open Ridden Hack Under 15h
16. Open Ridden Hack 15 & Over  
*GRAND CHAMPION RIDDEN HACK*
17. Paint Bred Ridden Hack
18. Amateur Owner Paint Bred Hack
19. Open Hunter Hack
20. Youth Hunter Hack
21. Amateur Owner Hunter Hack
22. Paint Bred Hunter Hack

## DAY 2 - MONDAY 30TH APRIL

### Hunter Under Saddle

23. Open Hunter Under Saddle Classic
24. Youth Hunter Under Saddle Stakes
25. Senior Youth Hunter Under Saddle
26. 2 Year Old Hunter Under Saddle
27. Junior Youth Hunter Under Saddle
28. 3 Year Old Hunter Under Saddle
29. Junior Horse AO Hunter Under Saddle
30. 4 & 5 Year Old Hunter Under Saddle
31. Senior Horse AO Hunter Under Saddle
32. Paint Bred Hunter Under Saddle
33. AO Paint Bred Hunter Under Saddle

34. Master AO Hunter Under Saddle
35. Senior Hunter Under Saddle
36. Senior Youth Hunt Seat Equitation
37. Junior Youth Hunt Seat Equitation
38. Amateur Owner Hunt Seat Equitation
39. English Pleasure
40. Paint Bred English Pleasure
41. Youth Teams Ride

### Halter Futurities Night Program

#### YISC Weanling Futurity

- A. Weanling Futurity
- O. Paint Bred Weanling Futurity

#### YISC Yearling Futurity

- B. Yearling Futurity
- P. Paint Bred Yearling Futurity
- C. 2 Year Old & Over Halter Maturity
- Q. Paint Bred 2 Year & Over Halter Futurity

## DAY 3 - TUESDAY 1ST MAY

### Halter [Regular registered]

42. Weanling Colt
43. Yearling Colt
44. 2 Year Old Colt
45. 3 Year Old Colt
46. 4 Years & Over Stallion  
*GRAND CHAMPION STALLION/COLT*
47. APHA Colt/ Stallion
48. Weanling Gelding
49. Yearling Gelding
50. 2 Year Old Gelding
51. 3 Year Old Gelding
52. 4 Years & Over Gelding  
*GRAND CHAMPION GELDING*
53. APHA Gelding
54. Weanling Filly
55. Yearling Filly
56. 2 Year Old Filly
57. 3 Year Old Filly
58. 4 Years & Over Mare  
*GRAND CHAMPION MARE/FILLY*

59. APHA Mare/Filly
60. Overo Colour Class
61. Tobiano Colour Class
- V. Yearling Versatility Halter
- D. Yearling Lungeline Futurity
- R. Paint Bred Yearling Lungeline Futurity
62. Yearling Lungeline
63. Paint Bred Yearling Lungeline  
Amateur Owner & Youth Meetings

### Night Program

#### Hunter Under Saddle Futurities

- G. 2 Year Old Hunter Under Saddle Futurity
- J. 3 Year Old Hunter Under Saddle Futurity
- T. Paint Bred Hunter Under Saddle Futurity
- M. 4 Year & Over HUS Futurity

## DAY 4 - WEDNESDAY 2ND MAY

### Halter [Paint Bred]

64. Weanling Colt
65. Yearling Colt
66. 2 Years & Over Colt/Stallion  
*GRAND CHAMPION PB STALLION/COLT*
67. Weanling Gelding
68. Yearling Gelding
69. 2 Years & Over Gelding  
*GRAND CHAMPION PAINT BRED GELDING*
70. Weanling Filly
71. Yearling Filly
72. 2 Years & Over Filly/Mare  
*GRAND CHAMPION PAINT BRED MARE/FILLY*

### Paint Bred Amateur Owner Halter

73. AO Paint Bred Colt 1 Year & Under
74. AO Paint Bred Colt/Stallion 2 Years & Over  
*GRAND CHAMPION AO PB COLT/STALLION*
75. AO Paint Bred Gelding 1 Year & Under
76. AO Paint Bred Gelding 2 Years & Over  
*GRAND CHAMPION AO PAINT BRED GELDING*
77. AO Paint Bred Filly 1 Year & Under
78. AO Paint Bred Filly/Mare 2 Years & Over

**Afternoon prior to show AGM & Board meeting**

# SHOW PROGRAM



**GRAND CHAMPION AMATEUR OWNER  
PAINT BRED FILLY/MARE**  
V-PB Paint Bred Yearling Versatility Halter

## **Halter [Amateur Owner]**

- 79. AO Colt 1 Year & Under
- 80. AO Colt/Stallion 2 Years & Over
- GRAND CHAMPION AO STALLION/COLT**
- 81. AO Gelding 1 Year & Under
- 82. AO Gelding 2 Years & Over
- GRAND CHAMPION AO GELDING**
- 83. AO Filly 1 Year & Under
- 84. AO Filly/Mare 2 Years & Over
- GRAND CHAMPION AO MARE/FILLY**

## **Halter [Youth]**

- 85. Youth Gelding
- 86. Youth Mare
- 87. Youth Paint Bred Gelding
- 88. Youth Paint Bred Mare

## **Showmanship**

- 89. Senior Youth Showmanship
- 90. Junior Youth Showmanship
- 91. Amateur Owner Showmanship
- 92. Master Amateur Owner Showmanship
- 93. Youth Paint Bred Showmanship
- 94. Amateur Owner Paint Bred Showmanship

## **Hunter In Hand**

- E. Hunter In Hand Futurity**
- 95. Yearling Hunter In Hand
- 96. Junior Horse Hunter In Hand
- 97. Senior Horse Hunter In Hand
- 98. Paint Bred Yearling Hunter In Hand
- 99. Paint Bred 2 Years & Over Hunter In Hand

## **DAY 5 - THURSDAY 3RD MAY**

### **Western Horsemanship**

- 100. Senior Youth Western Horsemanship
- 101. 2 Year Old Western Horsemanship

- 102. Junior Youth Western Horsemanship
- 103. 3 Year Old Western Horsemanship
- 104. AO Western Horsemanship
- 105. 4 & 5 Year Old Western Horsemanship
- 106. Paint Bred Western Horsemanship
- 107. Senior Western Horsemanship
- 108. Youth Decathlon
- 109. Amateur Owner Decathlon
- 110. Senior Youth Bareback Equitation
- 111. Junior Youth Bareback Equitation
- 112. Amateur Owner Bareback Equitation
- 113. Leadline
- 114. Youth Walk/Jog
- Youth Teams Relay
- Youth stick horse event

## **Pleasure Futurities Night Program**

- F. 2 Year Old Western Pleasure**
- I. 3 Year Old Western Pleasure Futurity**
- S. Paint Bred Western Pleasure Futurity**
- L. 4 Years & Over Western Pleasure Futurity**
- Youth Auction

## **DAY 6 - FRIDAY 4TH MAY**

### **Trail**

- H. 2 Year Old Trail Futurity**
- K. 3 Year Old Trail Futurity**
- N. 4 Years & Over Trail Maturity**
- U. Paint Bred Trail Futurity**
- 115. Yearling Led Trail
- 116. Paint Bred Yearling Led Trail

### **Western Pleasure**

- 117. Western Pleasure Classic
- YISC 2 Year Old Western Pleasure Futurity**
- 118. Senior Youth Western Pleasure
- 119. 2 Year Old Western Pleasure
- 120. Junior Youth Western Pleasure
- 121. 3 Year Old Western Pleasure
- 122. Amateur Owner Junior Western Pleasure
- 123. Senior Youth Western Equitation

- 124. Junior Youth Western Equitation
- 125. Amateur Owner Western Equitation

## **Trail**

- 126. Senior Youth Trail
- 127. 2 Year Old Trail
- 128. Junior Youth Trail
- 129. 3 Year Old Trail
- 130. 4 & 5 Year Old Trail
- 131. Amateur Owner Junior Horse Trail
- Amateur Fashion Parade

## **DAY 7 - SATURDAY 5TH MAY**

- 132. Amateur Owner Senior Horse Trail
- 133. Paint Bred Trail
- 134. Amateur Owner Paint Bred Trail
- 135. Senior Horse Trail
- 136. 4 & 5 Year Old Western Pleasure
- 137. Amateur Owner Senior Western Pleasure
- 138. Master Amateur Owner Western Pleasure
- 139. Paint Bred Western Pleasure
- 140. AO Paint Bred Western Pleasure
- 141. Senior Western Pleasure
- 142. Youth Western Riding
- 143. Open Western Riding
- 144. Amateur Owner Western Riding
- 145. Youth Reining
- 146. Junior Reining
- 147. Amateur Owner Reining
- 148. Paint Bred Reining
- 149. Senior Reining
- 150. Youth Keyhole
- 151. Amateur Owner Keyhole
- 152. Paint Bred Keyhole
- 153. Open Keyhole
- 154. Youth Barrel Race
- 155. Amateur Owner Barrel Race
- 156. Paint Bred Barrel Race
- 157. Open Barrel Race
- TS Team Sorting
- Presentation of Awards



# SARCOIDS A REVIEW

Article: John Kohnke

**Sarcoid skin tumours are the most common type of skin ‘cancer’ in the horse, accounting for up to 90% of all skin growths affecting horses and donkeys. The majority are non-malignant, although they can invade the full thickness of the skin with a fibrous, epithelial growth which can attach to the underlying connective tissue. Sarcoids have historically been the most difficult skin tumours to treat and/or remove surgically, with a high recurrence within 12 months.**

Whenever a treatment or therapy is not totally effective, a multitude of herbal and other remedies are touted as being beneficial with anecdotal reports and testimonials of success. Some of these ‘home-made’ therapies may lead to partial regression for 6-12 months, but complete removal of lesions is often not achieved.

Up to 40% of horses can have multiple lesions and 50% of horses redevelop sarcoids following surgical removal of the primary lesions. Although most breeds of horses are susceptible, Appaloosas, Arabians, Quarter Horses, Warmbloods and Thoroughbreds appear to have the highest incidence. Geldings have double the risk as compared with mares. Standardbreds are considered to have the lowest risk of any breed because they have lower expression of skin specific antigen reactions, whereas the most commonly affected breeds have increased gene expression for skin antigens or allergy triggers. Surveys have shown that sarcoids are more common in donkeys and mules. Sarcoids usually initially develop in horses aged less than 4 years of age, but any horse which has its immune system compromised appears to have a higher risk of sarcoids.

## Sites of Sarcoids

The most commonly affected sites include the ears, corners of the mouth (lip commissures) and around the eyes, then the neck, legs, groin and under body. Studies have shown that in colder climates, the head and neck are more likely to develop sarcoids, possibly due to insect or fly attack, as compared to warmer climates, such as Australia, where the neck and limbs have a higher incidence. Sarcoids can also develop around the edges of wounds or even where a head stall or bit rubs in the corners of the mouth.

## Causes of Sarcoids

Although there is a definite genetically linked breed predilection for sarcoids, there are many other possible ‘trigger’ factors including UV radiation, trauma to the skin and viral infection. Surveys



in the USA indicate that bovine papilloma virus (BPV), which cause skin warts and small tumours around the eyes, face and underbelly regions of cattle, have been associated with the development of sarcoids in horses and donkeys. Researchers have isolated BPV viral DNA and RNA of 2 out of 6 sub-types of BPV in sarcoid lesions on horses. A papilloma virus, similar to BPV, is suspected of causing sarcoids in Australian horses. The most common incidence occurs in mustering and cattle working station horses in the northern parts of Australia. It is thought that seasonal insect transmission from affected cattle to nearby horses could occur on cattle properties. The sarcoids are usually located on the skin under or adjacent to tack, such as breast plates, head stalls, bits

and the girth, where the skin may be traumatised and attract biting insects, such as mosquitoes. Horses raised on dairy farms in the USA have a higher incidence of sarcoids.

Sarcoids are not likely to be spread from horse to horse. However, on an affected horse they can, if disturbed by surgery to remove them or local trauma, develop on multiple sites around or nearby the original lesion, as a result of so-called ‘seeding’ to surrounding tissue.

## Types of Sarcoid

There are five histologically classified types of sarcoid, with an additional form of mixed cell types originating from 2 or more primary types. The table on the top of the next page summaries the various types of sarcoids affecting horses.

## Did You Know That ...

- Sarcoids have not been reported in horses in Norway – where biting insects are not found due to the cold climate. Wet, warm weather with increased biting insect activity appears to be associated with an increased incidence of sarcoids in young horses under stress with compromised immunity due to respiratory conditions, heavy worm burdens or injury.
- Any flat or raised skin growth around the eye is most likely to be a sarcoid.
- Whilst sarcoids are the most common skin tumour (neoplasia) in horses, squamous cell carcinomas (SCC) around the lips, eyes, anus and external genitalia are the second most common skin tumour. They can also occur in the oesophagus, stomach, sinuses, tongue and hoof.
- Melanomas are the third most common skin tumour in horses, mostly affecting aged, grey horses. In non-grey horses, melanomas, arising from melanocyte pigment cells, metastasise and spread quickly due to a non-melanocyte origin and are similar to invasive skin melanomas in humans and dogs associated with hair follicles.
- The most common breeds affected by



**Reference:** Knottenbelt, D.C. (2005). Clin. Tech. Equine Pract 4: 278-295

Type	Signs	Common Sites	Sarcoid Appearance
Superficial Skin Sarcoids (Most common form).	Hair loss, skin scurf/scalding, thickened skin.	Neck, face, lip edges, sheath, above hocks and shoulder.	Flat, scaly, oval shaped with a thickened skin surface, more darkly pigmented than surrounding skin.
Verrucous Sarcoids	Lesions up to 6cm diameter, dry, horny surface.	Head, neck, under elbows, groin.	Wart-like, 'cauliflower' appearance.
Nodular Sarcoids	Sarcoids develop under skin with normal skin and hair overlying.	Eyelids, udder, sheath and groin. Trauma may trigger spread and growth.	Classified into Type A or B. Type A -subcutaneous only. Type B - attaches to underside of skin to reduce skin movement.
Fibroblastic Sarcoids	Fleshy, lumpy lesions on skin, often attached by strand of tissue (pedunculated).	Groin, legs, under elbows, around eyes and previous wound sites.	Fleshy, vascular 'proud flesh'- like lesions which ulcerate and bleed easily if knocked or rubbed by tack.
Malignant Sarcoids	Very invasive, aggressive form, spreading rapidly and into subcutaneous tissue.	Usually only elbows and jaw line.	Swollen, soft, weepy appearance with multiple tumour lumps and a raspberry-like surface.

sarcoids, SCC and melanomas are Appaloosas and Arabians, with Paint Horses, Pintos and Draught Horse breeds having a higher risk than Thoroughbreds.

- Horses which are at risk of developing skin de-pigmentation around the eyes or lips as they age, including Paints,

Appaloosas and especially grey Arabians, have a higher risk of melanomas.

#### **Sarcoids have no Pain Sensation**

Common with all skin cancer tissue, sarcoids have no pain sensation themselves and most types, except the rarer fibroblastic form, do not bleed excessively, such

as when swabbed with methylated spirits and pricked with a sterile hypodermic needle. However, discomfort can be associated with inflammation due to a surrounding injury or tack rubbing on the skin adjacent to a sarcoid to the skin. A sarcoid can become ulcerated, inflamed, infected or locally reactive due to trauma or irritant forms of topical chemical treatments applied to the skin in an attempt to remove it.

#### **Biopsy Sample Size is Important**

It is important to take a large sample size in preference to a needle or punch biopsy as the tumour and fibroblastic tissue type can vary within a sarcoid. This is especially important where the Sarcoid has been traumatised or treated with superficial medications prior to the biopsy. Many small sarcoids are histologically similar to the skin reaction to insect bites with eosinophil white blood cell infiltration, suggesting that some sarcoids are triggered by allergic skin bites in susceptible breeds of horses.

#### **Diagnosing the Type of Sarcoid**

The appearance, location and consistency of a sarcoid is used as a basis for primary identification of the type of sarcoid. This can be confirmed by biopsy of tumour to identify cell types. Surveys have shown that up to 50% of flat or Verrucous Sarcoids will transform into a more aggressive form when disturbed by a biopsy within 2 weeks of the sample being taken.

#### **Treating a Sarcoid**

Although there are many herbal and 'grandma' treatments for sarcoids, many

#### **Success Rates of Different Treatment Methods**

Treatment Form	Success Rate	Complications 50 – 60%
Surgery alone.	Variable, often not long term.	Regrowth in 6 months. Large incisions require skin grafts to prevent a blemish.
Cryotherapy (Dry ice cooled probes to -20°C to -30°C inserted for 2-3 freeze thaw cycles)	70%. Generally, most types of Sarcoids are controlled.	Damage to surrounding skin, healing time 2-3 months. White hair regrowth. Not recommended around eyes.
Carbon Dioxide Laser (specialist therapy).	81% of sarcoids. Often combined with conventional therapy.	Cuts and evaporates tumour tissue – little collateral skin damage.
Radiowave - induced hyperthermia heats sarcoids to 50°C for 30 seconds - kills proliferative cells.	100% success when repeated twice 3 weeks apart. Regression 7-12 months	Large sarcoids can leave crater in skin when removed and slow to heal.
Radioisotope therapy.	Medical radiation therapy 50-100% regression for 12 months.	Often combined with surgical debulking.
Cisplatin applications - chemotherapy	87% free of sarcoids over 12 months.	Chemotherapy drugs need careful handling as toxic to humans.
Topical Cytotoxic Therapy (XXXTerra® therapy)	Claimed to regress 95% of sarcoids. Not available in Australia.	Contains zinc chloride and blood root extract. Safe on normal skin. Repeated every 6 days until tumour resolves.
Immunotherapy BCG (Regressin®) or Equimune®-stimulates host lymphocytes and natural killer cells to reject tumour.	50-80% remission - safe around eyes. Injected in multiple sites into tumour. Results in sloughing of sarcoids in 4-6 weeks.	Severe anaphylactic shock can occur after repeated injections.
Anti-viral immune-modulation	100% success rate in trials	Success suggests that sarcoids could be viral in origin. Still under development
Topical Herbal Therapies. Herbs with anti-viral effects may have some benefit- blends vary.	Variable success rates. Multitude of herbal combinations suggest 'hit and miss' therapy.	When all else fails, may be a last resort. May stimulate immune rejection response. But if it is flat, leave it alone!





are either ineffective or cause partial regression and others result in proliferation of the sarcoid. Only the successful cases or those

#### **General Rule of Thumb for Treating Sarcoids**

Dr. Anthony Yu, a veterinary dermatologist at the University of Guelph, Ontario Canada, recommends that if a sarcoid is flat and level with the skin – leave it alone. It is unlikely to spread or enlarge, unless it is traumatised by tack rubbing on the

lesion. However, if a sarcoid is raised and lobulated, treat it aggressively or surgically remove it. Sarcoids located around coronet or lower limbs should be removed as they are likely to be traumatised as a horse is worked.

#### **Do You Have a Number of Horses with Sarcoids?**

If you breed or train Appaloosas, Arabians or Quarter Horses, then there could be a natural predilection to sarcoids, because they have increased genetically induced

W13ELA antigen expression. If these animals share paddocks with cattle or are used as 'cow working' stock horses, there is a possibility that a number of these horses in a group will develop sarcoids, especially geldings between 1-7 years of age. In this case, it would be best to avoid running horses nearby to cattle, especially during periods of high biting insect activity following rain or during the warmer months, especially horse flies and mosquitoes, which may carry the BPV-like virus infection from cattle to horses.

# ***Kohnke's Own®*** **Mag-E**

**Contains  
Organic Magnesium  
Protein Chelate for  
Optimum Absorption**

**Did you know a deficiency in magnesium  
can lead to restless & uneasy behaviour?**

**Same Price Per Dose as the larger pack sizes!!**

**Large Horse  
Ponies**

**15 - 20 days  
20 - 30 days**



**New 425g Starter Pack**

**[www.kohnkesown.com](http://www.kohnkesown.com)**

**Ph: 1800 112 227**



# Tania Hobbs

## Official Photographer Q12

- \* Stud Photos
- \* Ad Design
- \* Business Cards
- \* Shows
- \* Promotional Items



When **ENOUGH** is....  
2009 AQHA Stallion T.D. 3Mk

# World Champion Enough

**\*IMP**

Sire - Mr Elusive  
(World Champion & Multiple World Champion Sire)

Dam - Ladys Luv Touchdowns  
(World Champion & World Champion Producer)

Open World Champion  
Open Superior Halter  
High Point Halter Stallion of America  
High Point Junior Halter Stallion of America

proudly owned by  
Smiths Creek Partners  
Enquiries Karen Lonski  
www.smithscreekpartners.com

Photo: © Montgomery Don Equestrian - Photo: Karen Hobbs



[www.taniahobbsphotography.smugmug.com](http://www.taniahobbsphotography.smugmug.com)

Artwork and Photos - Tania Hobbs



## Superior All Round Horse Champion No 15

# Pretty Sensational

Article: Joy Con    Photos: AGILE, Pinky, Alyson McGovern

**Her name describes her well! She was bred by Robyn Mills in 2005 and she is sired by, Sensation Seeker (x Ima Cool Seeker (IMP/Dec) and from the dam, Powdered Oak (x Tassy Oak). I saw Lacee as a three week old foal while visiting Robyn's and fell in LOVE – two weeks later I dragged hubby, Steve, to Robyn's telling him, "You've got to come and see this filly!" Unfortunately we were unable to purchase her at the time, but in June 2007 she was given to me as a birthday present and our lives have never been the same.**

We took her to her first show, where she was judged Champion Paint Mare and then in July competed as a yearling at the 2007 Qld Paint Horse Championships for minor places. We decided to send her to Meredith Rehn to break, train and campaign her as a two-year-old and she was started under saddle for two weeks and then sent home. Then EI struck and we all had six months off. She was eventually returned to Meredith in the January of 2008 and when the travel restrictions were completely lifted we were able to go showing.

We took her to a few local shows before competing at the 2008 Qld Pinto Horse Championships, where she won five Championships and one Reserve, taking out Overall High Point Junior Horse of the show.

The EI outbreak caused the delay of the 2008 National Paint Horse Championships from earlier in the year to August. It was to be our very first National Show and what an introduction. It was so cold in Dubbo, but still we had a very good time while enduring the cold temps and rain and met a lot of really nice folks. We were also very happy with Lacee's results – she attained a Reserve National Champion 2-yr-old Trail and top five placings in 2-yr-old HUS (Hunter Under Saddle), WP (Western Pleasure) and Jnr. Western Horsemanship, and she even placed 3rd Open English Pleasure.

From the few shows she did, she was awarded PHAA Champion Horse No: 210 and received R.O.M.s in Halter, A/O Halter, WP, Trail, Western Horsemanship, HUS and Hunter In Hand. The PHAA had

abolished the Honour Roll for that season because of EI, but the SEQPHC still had their end of season Hi Point Awards, where she received, 2007-2008 Horse of the Year, for the club. We have always been left contemplating the question 'If only EI hadn't struck, what could've been?'

Meredith continued campaigning her in the 2008-2009 season until after the 2009 Nationals and NSW State show. At the 2009 Nationals she won Reserve Champion Jnr Horse WP, Jnr. Horse Hack and Jnr. Horse Reining, Reserve Champion 3-yr-old WP Futurity and thirds in 3-yr-old HUS and Trail Futurities. Another accomplishment for Lacee was with one of our senior youth riders, Ellie Anderson [who had never competed at a show, let alone a National Show] won National Champion Senior Youth Western Pleasure.





We then travelled across to Tamworth (AELEC) for the 2009 NSW Championships where she won State Champion Jnr. Horse Reining and Reserve Champion in Dressage, plus placing's in all her other classes. Rhianna again took to the saddle and won State Champion Snr.Yth HUS, Snr.Yth.WP, Snr.Yth. Western Horsemanship and Snr.Yth Trail. At the end of the show Lacey was Runner-up Hi Point Jnr. Horse and Rhianna, Hi Point Senior Youth.

Ellie Anderson and I then took over the reins for the rest of the season and competed at the QLD Paint Horse Championships, where she won State Champion Mare/Filly Hunter In Hand, Reserve Champion 3-yr-old HUS and 2005 Halter Mare. Ellie also picked up a couple of Reserve Champions and minor placings in the Senior Youth classes.

By the end of the 2008-2009 season the Honour Roll showed that Lacey not only won the High Point Junior Horse award, but also came third place Overall Performance Horse and equal third Overall High Point Halter Horse. Honour Roll Champion Jnr Horse Western Pleasure, Hunter in Hand Mare/Filly and I attained my R.O.M.s in A/O Showmanship and A/O Halter, and made No: 8 on the Top 10 A/O (Amateur Owner) list. We also claimed Hi Point and Runner-up awards with SEQPHC, GQHPC and SBWPC. She achieved her PHAA Superior Awards at Halter, WP and Trail, along with receiving points in Dressage, Hacking, Reining and Barrel racing.

The 2009-2010 year started out with Ellie and I enlisting the services of a new coach, Leanne Bartlett, who over the years has guided many Youth and Amateur Owners to great success. We decided to concentrate on A/O and Senior Youth classes for the season with the occasional Jnr. Horse class. Our first show was the PHPA Qld State Championships. It was thought that

this would be an ideal event for me to start with to get my confidence up in preparation for competing in the open performance shows. It couldn't have been better – Lacey won Hi Point Jnr. Horse and Overall Hi Point Pinto Horse, Overall Hi Point AO and Ellie Overall Hi Point Youth.

We then started our campaign doing many local performance shows, getting in practice for the 2010 PHAA National Show. All was going to plan, until Ellie suffered a bout of Glandular fever. She was finally cleared to ride two weeks before the Nationals started, with strict instructions to get plenty of rest. Even with Ellie becoming tired quickly and both of us suffering severe nerves about competing at our first Nationals, we did really well.

With Leanne in the saddle, Lacey picked up Top five placings in the Futurities. Ellie became 2010 PHAA National Champion Senior Youth HBUS and Reserve National Champion Senior Youth English Equitation and minor placings in all her other youth events. My biggest achievements were placing 4th in A/O WP, 3rd A/O Keyhole and Reserve National Champion Open Barrel Race. I also placed 7th in A/O Trail, which in itself was an achievement, as I had struggled with this event leading up to the Nationals. Due to studies and other college commitments, Ellie was unable to do any further competitions after the 2010 National show, so I was on my own competing.

On the 24/04/2010 Lacey won her final points to gain her R.O.M. in Barrel Racing. This R.O.M. was the last one required for her to achieve PHAA Superior All Round Horse, an award attained by only a handful of horses since the formation of the PHAA.

At the completion of the 2009-2010 season, Pretty Sensational was announced as PHAA Hi Point Halter Horse and attained

her Bronze Century at Halter. I was also pretty pleased with myself, as I was No: 3 with Lacey on the Top 10 A/O list, and Honour Roll Champion A/O Showmanship, and A/O Hunter under Saddle. Despite Ellie not being able to complete the show season, she was announced Runner-up Hi Point Senior Youth, actually finishing No: 3 on the Top 10 Youth list. She was also able to gain her PHAA Champion Youth Award.

Along with being awarded the PHAA Superior All Round Horse Award. Lacey was awarded PHAA Champion Youth Horse and PHAA Champion A/O Horse. Our investigations have told us that Pretty Sensational is the first horse, in the history of the PHAA, to achieve all three awards.

The 2010-2011 was a lean year for shows, for a many number of reasons. We only attended a few local shows and the 2011 Qld Paint Horse Championships and P.O.R. Leanne Bartlett was again enlisted to exhibit Lacey at both of these shows. After only two weeks work we were awarded Hi-Point 4 and 5-yr-old and Runner-up English Horse at the State Show. I was Qld Champion A/O Showmanship, for the 2nd year in a row and placed in HUS and English Equitation. We were also thrilled to be 2011 Qld Champion 4-yr-old and over Mare.

We have been so blessed to have this little mare in our lives and would like to thank Meredith Rehn for giving her the best start and early success. Thank you to Ellie Anderson and Rhianna Foster for gaining the points for her Champion Youth Horse award. Thanks to my husband Steve for being my biggest supporter, and Leanne Bartlett for all her hard work and understanding, and most of all for being my friend. We believe Lacey has a big heart and she is a Great little all-rounder that certainly lives up to her name – 'Pretty Sensational'.





# HIGH POINT AWARD WINNERS

## Sharing their story ...

### Stacey Bentley (Senior Youth)

Unlike many youth, I have had the great opportunity to break in my own horse (with some guiding of my lovely mother, Helen). Charley was born in 2007, but unfortunately was sick with an unknown virus which then often restricted rides. However with a lot of time, effort, allergy testing, and love, we were able to keep the virus relatively under control.



After persevering through these tough and aggravating times it has paid off. To hear that I was High Point Senior Youth was certainly something I did not see coming. I am very thankful to everyone that has offered me that little bit of encouragement and support, and especially to mum for not giving up on 'fixing' Charley.

### Lisa Day (Amateur)

I began riding Paint Horses in 1984 at the tender age of 2 in Leadline classes. My parents bred Paints and Quarter Horses, owning the mighty Majestically and I was hooked. I would train diligently with Leanne Bartlett, Bert Purcell and my



parents urging me on. I rode Win-Rose'e Endeara, a tobiano mare in my early years before moving on to High-View Little Bit - O- Fire

in 1992. Little Bit taught me quite a bit, allowing me to achieve my first belt buckle at the 1993 Youth Spectacular.

and from across all breeds compete in teams to be the best of the best. With Leanne Bartlett as our manager, and my team mates, Danielle Franchina, Renee Brimelow and Melissa Cameron, my 11 and under, Almost Angels youth team went on to clean up and win overall team and my second belt buckle.

Little Bit was an amazing horse, I was so privileged to have shown her but adolescence saw me move on to ride Win-Rose'e Cutter's Chief, a PHAA Hall of Fame inductee. He taught me so much. We did every event on the program, even if they involved cows. Together we were a team to be reckoned with earning numerous state and national titles and high point of Australia awards. I was selected for the first PHAA Youth World Team and travelled to Fort Worth, Texas in 2000 to the World Show where I had a fantastic time, learnt so much from my team mates and others and placed 8th in Reining. During this time I was fortunate enough to lease Sachem Paint the Town from Melissa Carmichael and in one NSW State Show and National Show, came home with 17 belt buckles and enormous respect for my dear boys, Red and Chief.

I have ridden some true champions in my time and my latest mount is no exception. Win-Rose'e The Apprentice, or Smidgin as he is affectionately known, has been by my side since birth. His dam, Endeara had two strokes whilst pregnant and he came out the size of a dog and quickly lost all of his hair. Hand raised and spoiled, Smidgin is a "mummas boy". We won Hi-Point 2 yr old at the 2001 National Show and have won numerous State and National titles. Unfortunately, family circumstances saw me have to take a break from showing but I managed to pull Smidgin out of the paddock, dust him off and take him to each QLD State Show.

In 2010, Chief passed away. 5 months older than me and my brother in every sense of the word, I was disheartened and in mourning and did not make it to the state show. A few weeks later, I decided it was time. Time to get back out and do what I loved and began training Smidgin with the 2011 Nationals in mind. Smidgin and I went to the 2011 PHAA National Show with one agenda, to have fun. Never in my wildest dreams did I think I would come home with 9 National Titles and two beautiful belt buckles for Hi-Point Amateur and Amateur Versatility. The

people were awesome and it rekindled my love for showing. We finished the year with a bang, taking out Runner-Up Amateur at the 2011 QLD State Show and Overall Hi-Point Amateur of the Nation for 2011. Words could not describe my elation.

Now, my sights are set on 2012. I have a wonderful partner who supports me, 2 beautiful kids who love coming to shows and supportive parents who are so caring and who urge me on to do what makes me happy, ride my paints. My aim is simply to enjoy showing my old boy again this year and to play with my solid filly. It's been a long time since I have had a foal and love it!

I wish everyone all the best for a safe, happy and successful year with their horses and am going to enjoy catching up with some old friends who are returning to our lovely breed.

### Brooke Duddy (Junior Youth)

I have grown up with horses as part of my every day life. Both my parents breed and show horses, dad is a trainer. I started rid-



ing when I was two years old on an amazing pony called Rusty.

After an extensive and unsuccessful search for a suitable Paint

Horse for me to show we were told about this young green broke filly sitting in a paddock. I thought my parents had rocks in their heads when I first saw my future champion. To say I was not impressed would be an understatement. We were won over by her unbelievable temperament. Lots of love and feed soon transformed my ugly ducking into a multiple supreme exhibit. My beautiful Honey proved to be a very willing, trainable and talented pupil and after only 22 rides we attended our first show with instant success.

It was all systems go from then and there was no looking back.



# HONOUR ROLL 2010-2011

## OVERALL HIGHPOINT WINNERS

### Halter Horse



**SEEKING SUNDAY** 51.5  
Sire – Scotch On Sunday  
Dam – Glory Seeker  
Owner – Brooke Duddy  
Breeder – Debbie Richardson

### Performance Horse

**MOONGLADES BEST SCOTCH**  
180



Sire – Best Western (IMP)  
Dam – One Fancy Delight  
Owner – Sarah Saxer/  
Daniel Le Dierke  
Breeder – Karen and Mark Peek

### 2 Year Old Horse

**KPM RACKETEER** 123



Sire – Rackettes impressed (IMP)  
Dam – Charming One  
Owner – Gail Smith  
Breeder – Kevin Mills

### Junior Horse



**MOONGLADES BEST SCOTCH**  
196.5

Sire – Best Western (IMP)  
Dam – One Fancy Delight  
Owner – Sarah Saxer/  
Daniel Le Dierke  
Breeder – Karen and Mark Peek

### Senior Horse



**DEE BAR BLUE THE LOOT** 75.5  
Sire – Loots Image (IMP)  
Dam – Darwin Blue  
Owner – Suzanne Bone  
Breeder – Wayne & Christine  
Baumann

### Amateur Owner at Halter



**SO HOT N CHARMING** 19.5  
Sire – HF Somethin Hot  
Dam – I Am Just Charming  
Owner – Shirley Sommer  
Breeder – Shirley Sommer

### Leading Sire Halter



**LOOTS IMAGE (IMP)** 72.5

### Leading Sire Performance

**LOOTS IMAGE (IMP)** 365

### Leading Sire Overall

**LOOTS IMAGE (IMP)** 443.5

### PAINT BRED

#### Paint Bred Halter Horse



**TCS DUNNIT TOA TE** 26.5  
Sire – Temonee (IMP)  
Dam – Hillbilly Dunnit  
Owner – Mark & Leanne Gidman  
Breeder – Mark & Leanne Gidman

#### Paint Bred Performance Horse



**ROYAL HEART THROB** 115  
Sire – Belvedere Billiyarra  
Dam – Venus Pool Royalita  
Owner – L & J Wagner  
Breeder – Pam Simpson

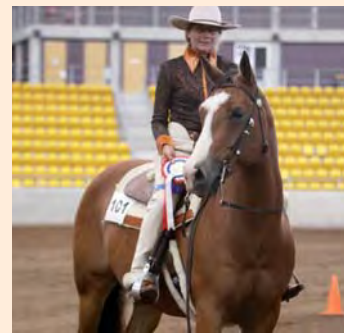
#### AO (Paint Bred) Halter

**SC ISNT SHE OBVIOUS** 14



Exhibited by Shirley Sommer  
Sire – Magnificent Touchdown (IMP)  
Dam – An Obvious Shame  
Owner – Karen Lonski and  
Craig Dengate  
Breeder – Karen Lonski and  
Craig Dengate

### AO (Paint Bred) Performance



**ROYAL HEART THROB** 115  
Exhibited by Jill Wagner 105.5  
Sire – Belvedere Billiyarra  
Dam – Venus Pool Royalita  
Owner – L & J Wagner

### Amateur Owner



**LISA DAY** 157

### Senior Youth



**STACEY BENTLEY** 138

### Junior Youth



**BROOKE DUDDY** 189.5



# TEMPERATURE, PULSE, RESPIRATION

Article by Robert N. Oglesby DVM    Photos: Tania Hobbs

**When you come in and there is something different about your horse, questions run through your mind. What is wrong? How serious is this? Should I call the vet? It is a change in your horse's behaviour that tells you something is wrong but may not tell you whether it is serious or not.**

Once illness is suspected, using vital signs may give a clue as to cause and the seriousness of the illness. Monitoring demeanour, temperature, pulse, and respiration is not only important diagnostically, but also for monitoring improvement or worsening of the illness. This article discusses how to take the vital signs, normal values, and assessing the seriousness of a sick horse.

## Local vs Systemic Signs

Diseases can be divided into 2 types: those that just effect a single organ system of the body and those that have a systemic effect. Local signs are things like a cough, snotty nose, diarrhoea, lameness. Signs of systemic involvement or serious disease are changes in the vital signs and include depression, remarkable pain, fever, and elevated heart or respiratory rate. For instance a horse with a cough or snotty nose that does not have a fever and bright and retains his appetite has a local disease problem. Or perhaps there is diarrhoea without other signs, a local problem again. On the other hand you might have systemic signs of depression or fever without localising signs. In general, diseases that don't have systemic involvement are not an emergency though there are exceptions. Rapidly worsening local signs should be considered an exception and when in doubt contact your veterinarian immediately and talk it over with him.

## Behaviour and Appetite

Vital signs are generally considered to be the objective measurements that evaluate the cardiovascular and respiratory systems. The systems that are needed from second to second to maintain life. However an important part of evaluating a sick horse is the subjective evaluation of a horse's demeanour which is related to his state of mind. We say that a normal horse is bright, alert, and responsive. Let's define each of these:

- **Bright:** A horse is bright when he instigates play or investigative behaviour on his own. This is a horse that is examining his surroundings looking for something new to do. It takes time observing a horse from a distance to determine if he is bright.
- **Alert:** A horse is alert if his head is up and is obviously seeking information about his immediate surroundings.
- **Responsive:** A horse that responds to stimulus like light, sound, or touch.

Horses that are not bright and alert are said to be depressed. Severe depression is when a horse is non-responsive to his environment. Depression is an important indicator of systemic disease. Acute onset of mild to moderate depression in horses is

most often either fever or colic so the horse should be observed for signs of colic and have his temperature checked.

## Temperature

A horse's temperature is the result of two factors, his heat production minus his heat loss. A healthy horse's temperature can vary as much as three degrees depending on conditions. For example: during heavy exercise a horse's normal temperature will



**Stand to one side while taking horses temperature.**



rise to 38.8 to 40.2 due to increased heat production and take four to eight hours to return to normal or near normal. Horses on a hot humid day may be normally as high as 38.6. Whenever you take a horse's temperature, consider his recent activity and environment. The best time to check a horse's temperature is in the morning after having rested in the stall all night. You should only compare temperatures that have been taken at the same time of day under similar conditions.

A normal resting temperature for a horse would be 37.2 to 38.3 degrees. A temperature above 38.3 in a resting horse on a cool day, may indicate a problem. Remember, that a high fever does not necessarily indicate a severe condition nor a low fever a mild one.

1. Shake down the thermometer so that the mercury is below 36.1. Not only is this important for the thermometer to work properly, but a check to see it is working properly. If it is broken it will not shake down and stay down.
2. Apply Vaseline to end of thermometer.
3. Have a helper to hold the horse. The helper should stand on the same side of the horse that you are on. Insert the thermometer in the horse's anus while you stay by the horse's hip. Insert it most of the way in.
4. Allow the thermometer to remain in for three minutes before removing and reading. Hint: Most people find it helpful if they attach a string and clothespin to the thermometer to keep from losing it. After inserting the thermometer, attach the clothespin to the horse's tail.

*Important: If you get an abnormal reading you should carefully repeat all these steps to be sure you have not forgotten a step, this happens frequently.*

### Pulse

For every beat of the heart, there are two or more heart sounds and one pulse of the artery occurs. The heart rate of a normal horse will vary. The heart rate is affected most noticeably by exercise and excitement. An exercising horse's heart rate may double, triple or, in the case of a racing thoroughbred, increase to more than five times its resting rate.

Sickness will also cause the heart rate to elevate. Pain, fever, and changes in blood pressure all affect heart rate. In general, the higher the heart rate, the more severe the condition. Bearing in mind all these factors, you realise that to get an accurate resting heart rate, you must take his pulse in a quiet setting when he has not been recently exercised.

To get good at determining pulse rate requires practice. Horses also vary in the ease with which you can feel the pulse. The resting pulse of the horse is around 40 but may vary from the 32 of a resting athlete to the 48 of a young horse unaccustomed to the attention. The rate of foals is considerably higher.

In a quiet place have someone hold the horse's lead close to the head to keep it still.

- Place your index finger under the jaw against the inside of the horse's cheek.
- Move your finger back and forth feeling for the blood vessels. You can feel it roll under your moving finger.
- Place the tip of your finger over the vessel with firm but gentle pressure. Concentrate on what that finger is feeling. Give yourself time to pick up the pulsations.
- Once you are feeling the pulse regularly time the number of pulses over a fifteen-second period. Multiply the number by four to give you the minute heart rate of the horse.

*Hint: If you are interested in monitoring your horse's heart rate, you will probably find it easier with a stethoscope. Nurse models are not expensive. Get your vet to help you learn the heart sounds.*



**Taking the pulse of the horse. Place your index finger under the jaw against the inside of the horse's cheek.**

### Respiration

You would think counting a horse's respiration would be easy. Next time you are observing your horse at rest see if you can see him breathe. A horse has tremendous respiratory reserve that he uses when he runs. As a result, at rest he breathes very shallow and somewhat irregularly. The same factors that affect the other vital signs also affect respiration and must be taken into account to determine if the horse is sick. Normal respiratory rate is around eight to 12 breaths per minute, slightly higher during hot weather.

- If you can see the rib cage move, count the breaths over a 30-second period and multiply by two to get the minute respiratory rate.
- If you cannot see the ribs move, see if you can see the nostrils dilate with each breath and count those.

### Abnormal Respiration

- **Eupnea:** The normal quiet and seemingly effortless breathing pattern adopted by the healthy horse at rest. Inspiration and expiration in the horse are active processes.
- **Tachypnea:** A breathing pattern characterised by rapid frequency and shallow depth or small tidal volume.
- **Hyperpnea:** A breathing pattern characterised by an increase in the depth and rate of breathing, as might be found during exercise.
- **Apnea:** A period of time in which no discernible respiratory effort is made and air flow has ceased. Apnea may accompany sleep-related disorders or excessive ventilation (hypocapnia-induced apnea).





If you can see the rib cage move, count the breaths over a 30-second period and multiply by two to get the minute respiratory rate.

- **Hypoventilation:** A pattern of breathing that alters gas exchange sufficiently to cause hypercapnia or elevations of arterial carbon dioxide tension.
- **Hyperventilation:** A pattern of breathing that increases alveolar ventilation and results in arterial hypocapnia.
- **Dyspnea:** A breathing pattern that appears to reflect difficulty in breathing. The animal appears to be distressed, and increased work of breathing is obvious.

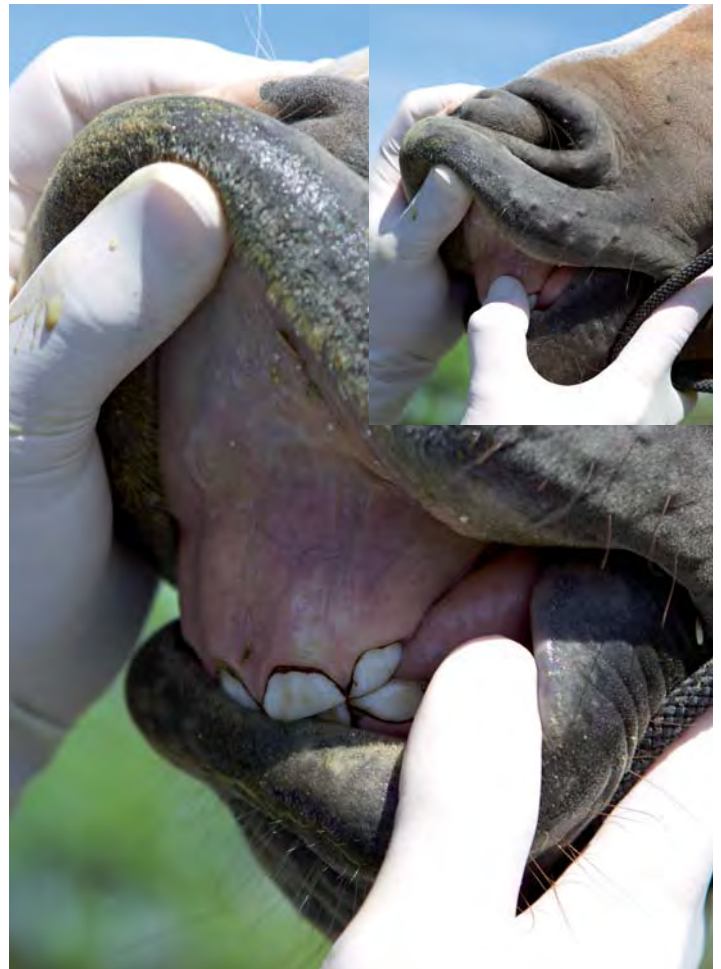
### Mucous Membranes

A horse's gums are normally slightly more pale than a human's. Mucous membrane colour helps establish the condition of the peripheral circulation. In many ways, this reflects the general condition of the circulatory system. The colour of our gums reflects the condition of the capillaries, these are the smallest of our blood vessels, and also the condition of the red blood cells themselves. Colour change of the mucous membranes occurs in response to many conditions. Realise that there is a lot of variation in the normal colour and slight changes in an otherwise normal horse should not be alarming.

Pale mucous membranes occur when either the vessels contract down or there is a decrease in the number of circulating RBC's. These are common causes of paleness:

- Fever
- Pain
- Anemia
- Blood loss from hemorrhage

A more significant finding is reddening and darkening of the mucous membranes. This indicates the vessels enlarging or the oxygen content of the blood lessening. This may indicate the first



Mucus Membranes of a healthy horse.

signs of shock, in a sick horse. The membranes will become a dark muddy red and progress to a purplish then grey colour, as the condition worsens. These last stages correspond to severe depression and illness. Causes of darkening redness to purplish membranes:

- Endotoxemia
- Toxic Shock
- Cardiovascular Shock
- Some types of poisoning like red maple

### Sclera

The whites of the eyes are called the sclera. The vessels on the sclera are easily seen individually. Early changes due to bacterial toxemia and septicemia will enlarge these vessels before the gums change colors. More frequently the vessels will be enlarged due to local inflammation of the eye, but these changes will only be seen in one eye (unless he happens to poke both eyes on the same day).

Because the sclera is so white, even a slight amount of abnormal pigments are easily seen in the sclera. The best-known being bilirubin which causes jaundice or icterus. The presence of icterus may be caused by:

- going off feed for several days
- excessive destruction of RBC's
- liver disease

This article reprinted with permission from Horseadvice.com, The Horseman's Advisor. Helping horse owners, equestrians, trainers, farriers, veterinarians and their horses with equine health and training information daily on the internet, since 1994. All rights reserved © 2007





# TIME TO SAY GOODBYE

Article by Marcia King; Reprinted with permission of The Horse; visit [www.TheHorse.com](http://www.TheHorse.com) for more horse health information.

**There comes a time in nearly all horse owners' lives when the last, best thing they can do for their horses is to release them from the agony of an untreatable condition or terminal illness via euthanasia.**

In some situations, the decision to euthanize is clear – a painful, devastating accident from which there is no recovery; an acute, fatal disease from which the horse is constantly suffering; or age taking away the horse's ability to move about and live comfortably. But often, the horse's injury or terminal illness is one where it might be difficult for the owner to determine if there is enough quality of life to offset a horse's discomfort or diminished lifestyle, or whether the horse has spiraled downward to the point where there is nothing much left in life for the horse to enjoy.

The whole painful process – deciding when the time has arrived, disposing of remains, dealing with grief – can be made less stressful when everything involved with the euthanasia process is understood and decisions are planned ahead of time.

## **Planning the Unpleasant**

"We live in a society that feels that planning ahead about death is morbid," says Carolyn Butler, grief counselor and coordinator of the Bond-Centered Practice at Colorado State University (CSU). Butler developed a curriculum for training veterinarians in grief education and support, and she is the former director of the Changes Program (a grief counseling service) at CSU.

"We know from research that if people spend a bit of time thinking about what would be appropriate, then when the event occurs, particularly if it's an emer-

gency, better decisions can be made," she continues. "Often, when people get to a crisis point, they're less likely to make good decisions."

Greg Couger, M. Ed. (Master of Education), grief counselor, and educator in the Changes Program at CSU, agrees. He adds, "Planning ahead gives the horse owner time to focus more on the emotions associated during the euthanasia process and more quality time to spend with the animal, as opposed to dealing with more of the business aspect of handling remains, and so on."

Horse owners should decide in advance how far they would want to proceed with treatment options and how much they can afford to spend on treatment. If an owner travels, he or she should leave clear instructions with the veterinarian on what to do if the animal takes a turn for the worst. "Set bottom lines in advance," Butler advises.

Think about, and discuss with family, when they want to say their farewells (before, during, or after euthanasia) and whether they want to be present during the procedure. Being able to say goodbye when one chooses – i.e., before instead of after euthanasia – can eliminate from an already stressful situation the frustration of not having been able to share a final moment with the horse when the owner preferred. Stresses Butler, "Children are also very attached to their animals, and they need an opportunity to say goodbye. Even if par-

ents decide not to have them present at the time of euthanasia, they definitely need to be involved in the decision ... and in the goodbye process at an age-appropriate level."

Butler recognizes that if someone has a healthy yearling, they're probably not going to call around for rendering rates or give tremendous thought to how they'd handle euthanasia. Still, fatal accidents or illnesses can strike horses of any age, so owners should at least know what their options are.

"For those who have an animal that's beginning to fail, if it looks like the horse only has a couple of weeks or couple of months left, the owner would benefit by putting a plan in place," Butler says. Even for healthy older horses, it's a good idea to give thought to bottom-line treatment and expenses, and how remains will be handled.

## **When is the Time Right?**

One of the toughest aspects of euthanasia can be deciding when the horse's condition is such that it would be more humane to put him down. In other words, consider how diminished the horse's quality of life should become before the owner says, "Enough."

Again, thinking ahead about this prospect when the horse is not in a crisis situation will yield clearer decisions. Many owners opt to keep the horse going until they



perceive he's suffering too much. Others feel it's more humane to let the horse go before he reaches that point. Explains Butler, "The owner might say, 'I don't want the death to be unpredictable. I don't want him to die in pain, so even though we have a little bit of time left, I'm going to proceed with the euthanasia, because I want to ensure the death goes a certain way.' Sometimes I'll hear owners say they think winter will be really hard on their old horses, so they euthanize a little earlier to protect their animals from discomfort."

Sometimes the answer is obvious as to when to put the horse down. Sean Bowman, DVM, of Marshall, Va., says, "In an acute situation where the horse is in severe pain and the prognosis is very, very poor, the decision to euthanize is usually a lot easier. You can pretty much say this is the right thing to do, and the time to do it is now."

But with geriatric horses or horses with chronic diseases or conditions, quality of life might be harder to measure and the decision on when to euthanize less distinct. Sometimes an owner is tempted to keep a horse going at all possible costs. Notes Philip J. Johnson, BVSc (Hons), DVM, Dipl.ACVIM, MRCVS, associate professor

in equine internal medicine at the University of Missouri, "Horses today are living longer due to better nutrition and medicine. However, many live with pain and disability because their owners prefer to 'treat' rather than request euthanasia for horses that, in the past, would have been euthanized. There are a lot of horses in our area which are being maintained beyond what many would refer to as humane."

When the line between euthanasia and treatment is blurry, Butler suggests the owner try to see if the horse is beginning to have more bad days than good days. "It's not that the animal is in excruciating pain, but the quality of life has begun to fade," she says. Chronic signs of a diminished quality of life could include inappetence, severe weight loss, difficulty in moving around, inability to get comfortable, spending a lot of time laying down, and depression.

"Does the animal still enjoy doing the things he's always enjoyed?" asks Ellen Buck, DVM, director of Equine Protection at the Humane Society of the United States and an equine practitioner in Maryland. Although the veterinarian might recommend euthanasia in acute situations, he or she might not always be able or willing

to tell you when the time has come for the fading animal. Says Buck, "I leave a lot of that decision-making up to the owner because they are there day to day and may be in a better position to assess the horse's quality of life."

Although quality of life is a primary consideration on when to euthanize, there are other realities that come into play: Age – Consider the horse's age when it comes to treatment options. Asks Bowman, "Should they take a 25-year-old horse to colic surgery? What is the potential outcome the horse is likely to have? What does the owner want to do with the horse? What will the value of the horse be after surgery?"

### **Difficulty of Nursing**

Another major consideration is if the horse is going to require treatment several times a day, every day, for a long period of time. Notes Bowman, "If the owner has a full-time job and is not going to be there, then the care is not going to be there to maintain the animal's quality of life."

People can't stop their whole lives for their horses. If they are unable to provide the proper care, it may be better for the horse to put the horse down."





## Cost

The cost to treat or manage a condition can be beyond an owner's resources. "Cost of care is a consideration and sometimes takes precedence over other things, and rightly so," says Buck. "Sometimes the cost of treating a chronic illness in the horse can be more than the owner can bear in addition to the routine cost of maintenance of the horse. If the cost of care combined with the quality of life is such that someone can't keep up with them, those are definitely valid considerations for euthanasia."

It's difficult to deny treatment because of expense, but that's a reality of life. Deciding ahead of time how much financial resources can be committed to the horse's health can ease the stress within the family when the financial boundaries are defined in advance, and those limits are finally reached.

Occasionally, an owner who can't keep up with medical expenses might place the horse with someone who can. However, the odds of someone wanting an unsound, older, or chronically ill horse are low. Says Buck, "An owner may send the horse to auction hoping someone will pick him up, but chances are that won't happen. We'd rather see a horse humanely euthanized than have an owner send him to auction where he may potentially end up at slaughter." At auction, Buck warns, the horse might be held in a small, overcrowded pen with unfamiliar horses where he could be hurt by more aggressive animals. Euthanasia is the more humane choice, she says.

## Saying Goodbye

When euthanasia is imminent, the owner should find a quiet moment to say goodbye. Says Butler, "If you know in advance your horse is not going to do well, it provides a very special time to say your goodbyes, to say your 'I love you's, to say 'I'm sorry' if you need to. It's important that people have complete endings with their animals, to know that whatever needed to be said has been said. People will then have a more positive grief outcome in the long run.

## The Euthanasia Process

When considering whether family members will be with the horse during the euthanasia, make sure the veterinarian explains the process and what can happen after the horse is injected.

The primary method of euthanasia is via a euthanasia solution. "The main method is an overdose of barbiturates," explains Bowman. "It is an induction to anesthesia, just like for surgery, but the veterinarian continues on to an overdose. The horses

are not afraid; there is no fear or anticipation." Onset of unconsciousness is very rapid, then the horse goes down. Occasionally, the unconscious horse does not always collapse neatly and quietly, which can be hard for the owner to witness. "Sometimes the horse goes over backwards and may briefly thrash around some," says Buck. "But loss of brain consciousness happens first, the movement is involuntary muscle activity, and that horse is not aware of it at all."

A less-used means of putting a horse down is by gunshot, which is sometimes used in emergencies by police when the horse is suffering and a veterinarian can't get there fast enough. Buck says that gunshot euthanasia is also commonly used in Britain due to rendering requirements involving the euthanasia solution in horses' bodies. "It's my understanding that gunshot euthanasia is a very humane technique if done correctly because it's absolutely immediate," she says. "The thought is not pretty, but the death can be peaceful." Buck points out, though, that the horse's brain is not large and is surrounded by a lot of bone, therefore the gun has to be placed absolutely correctly by someone who understands what they are doing.

## Disposal of Remains

Dealing with equine remains is cumbersome and sometimes costly. "Horses are really big," Bowman points out. "Getting rid of a horse's body is not like that of a dog that you can bury in the backyard. This becomes a big issue once the animal is dead, and is the biggest decision to make after deciding to put the horse to sleep." Because it can be time-consuming to investigate options, planning ahead facilitates the disposal. Check with a local veterinarian, local/regional bereavement centers, or friends for disposal options.

Advance planning should include how to handle the remains, who to contact to deal with the body, and how much advance notification is needed for the person who'll handle the remains. Also, the issue of what to do with the remains should be discussed by family members, including any children.

Depending on local zoning laws, the most common choices for handling remains include hiring a backhoe to bury the horse on the owner's property, hiring a rendering company to pick up the horse, or sending remains to a pet cemetery or crematorium. Bowman adds that in some areas where foxhunting is popular, the remains are sometimes fed to the hounds. "This is considered by foxhunters to be an appropriate, proud end to the horse," he says. "It's a tradition."

Bucks says that in Maryland, the cost of rendering and hiring a backhoe for burial at home are similar, about \$75-\$125.

## And When It's Over ...

The loss of a horse can be just as pronounced as the loss of a friend or family member. Says Butler, "Grief is grief. That animal was unique, the relationship was unique, and that particular animal will never exist in the owner's life again. That is a significant loss. So many times, our relationships with our animals are pure – no history of betrayal, no history of letting us down. The relationship has been clean all the way through and, therefore, the grief can go to a deep level. We should expect that if the attachment is really strong, the grief is going to be strong, too." Butler says it's a mistake to try to put a time frame on the grieving process. "It may take people days, weeks, months, or years, depending on the relationship and type of death ... The key is not how long it takes for the person to get through it, but that the grief lessens in intensity over time."

Learn more about horse husbandry and discover thousands of tips for keeping your horse happy and healthy in *Understanding Basic Horse Care*. Talking a loss over with friends or with bereavement counselors can also help ease the pain. Local counselors can be found in the phone book, through the veterinarian, the regional veterinary teaching hospital, or online. The Family Support Service run by the Argus Institute at CSU ([www.argusinstitute.colostate.edu](http://www.argusinstitute.colostate.edu)), the Delta Society ([www.deltasociety.org/dsn000.htm](http://www.deltasociety.org/dsn000.htm)), and the Association for Pet Loss and Bereavement ([www.plb.org](http://www.plb.org)) are some sites that explain the grieving process, provide information on coping with pet loss, recommend reading materials for various ages, list pet loss counselors and pet loss support hotlines, identify pet cemeteries and memorials, and offer chat rooms and e-mail assistance.

You can honor a departed horse with a charitable donation in memoriam. For example, the American Association of Equine Practitioners Research and Education Foundation's memorial program ([www.aaep.org/equine\\_memorial.aspx](http://www.aaep.org/equine_memorial.aspx)) allows an owner or veterinarian to donate (funding equine research, educational programs, and scholarships) in the name of the horse (or a human).

The bond between horse and owner can be very strong and deep. As the horse's caretaker and decision maker, you must be prepared in case of emergency, when your horse is depending on you. Planning today makes that easier when the time comes.



# PROBIOTICS & YEAST CULTURE PRODUCTS AND THEIR USE IN HORSES

Article by Robert N. Oglesby DVM

**Probiotics have been described as a live microbial feed supplement which beneficially affects the host animal by improving its intestinal microbial balance and exert health effects beyond inherent basic nutrition. The earliest published report of this concept was by Elie Metchnikoff in 1907 who conjectured that ingesting fermented milk products were responsible for longevity of certain ethnic groups by improving the quality of the intestinal microflora. The term was coined in the 60's.**

A related product but not truly a probiotic are killed *Saccharomyces* culture and byproduct nutritional supplements. These have come to be termed prebiotics. *Saccharomyces* is baker's yeast and many of the organisms are yeasts used in fermentation processes. Though often packaged live the survivability of these products is very short and therefore should be thought of as a nutritional supplement. However we will discuss them here due to their similarity to probiotics.

There is a growing evidence that certain live cultures of particular yeast may be useful in the treatment of colitis in horses. There has been an explosion of pre and probiotic products available and a concomitant rise in the use of these products. This article describes the principles of probiotic therapy, the research available into efficacy, and which products have solid research behind their use.

## **Do Probiotics Really Work in Horses?**

There is a growing body of evidence that certain live culture probiotic preparations lessen the severity of colitis, particularly that caused by *Clostridia*. There are many products currently on the market and it is likely many are not effective. However the yeast organism *Saccharomyces boulardii* given as a live lyophilized oral treatment at the rate of 25 gm, every 12 hours for 14 days significantly improved the clinical signs and shortened the duration on acute colitis of unknown causes. *Saccharomyces boulardii* is a nonpathogenic yeast used in the treatment of *C. difficile* diarrhea and colitis in humans. It remains uncertain what exactly is the nature of this treat-

ment but the yeast releases a protease that specifically degrades *C. difficile* toxins A and B, and this has been shown to be protective in experimental *C. difficile* colitis in rats and to prevent damage to human colonic epithelium by *C. difficile* toxins A and B in vitro. The yeast has mild virulence in mice, and its use in immunocompromised patients may not be entirely benign.

Research in humans suggests that probiotics may have a place in equine medicine and nutrition. In humans the GG strain of *Lactobacillus rhamnosus* has had the most research done on it and shown to be effective in:

- Acute diarrhea in children
- Travellers' diarrhoea in adults
- Crohn's disease (an autoimmune disorder of the digestive tract).
- reduced incidence of antibiotic-associated diarrhoea in infants.

Other strains studied *Lactobacillus rhamnosus*, *L. salivarius*, *L. reuteri*, *L. johnsonii*, *L. acidophilus*, *Bifidobacterium lactis*, *B. bifidum*, *B. longum*, *Enterococcus faecium*, and *Saccharomyces boulardii*.

It is important to understand that this positive research was done with laboratory cultures and not with commercial products. Research with commercial products has been disappointing in both horses and humans and a close look at the products suggest why. Misidentification of probiotic organisms, lack of viability of the organism, and fewer organisms present than were listed is the rule, not the exception. The numbers of viable organisms are critical to the success of pro-

biotic treatment. In one study of human products fewer than 20% matched their label claims with some having no live organisms at all. Initial looks at veterinary products suggest the same problem. Another problem with commercial products is the lack of strain specificity. It has been found that different strains of the same organism have different properties that effect efficacy. It is not enough to know what organism is present but also what strain of the organism it is.

## **Commercial Probiotics**

There has been very little research of probiotics in horses. In several studies using commercial *Lactobacillus* products in horses with Salmonellosis, shedding, prevalence of postoperative diarrhea, length of antimicrobial therapy, and length of hospitalisation in horses with colic did not decrease with their use. A non blinded Belgium study found a product called Bioracing could modify the physiological effects of training by improving some aerobic metabolic capacities for carbohydrate utilisation, but that this effect occurs only during training and not during periods of physical inactivity.

## **Yogurt Culture**

Yogurt has been used by medical doctors and veterinarians for the treatment of a variety of conditions but primarily diarrhoea and digestive disorders. Live yogurt cultures have been studied in horses and results are generally disappointing. Not all strains of *Lactobacilli* in yogurt possess probiotic properties and some common yogurt products contain strains of *L. delbrueckii* and/or *S. thermophilus*, which



have no demonstrable probiotic effect. Those with effective strains are generally thought to have too low a number of organisms to produce an effect, for more see the recommendations below.

### **Baker's Yeast**

In two different studies with four different concentrations of live *Saccharomyces cerevisiae* (bakers yeast) there was no change in the digestibility of dry matter, energy, protein, and neutral detergent fibre in mature horses.

Using some special preparations of dried *Saccharomyces cerevisiae* (Diamond V yeast) culture there have been some positive results. In several studies of growing horses an improvement of digestion of nutrients and improved weight gain were seen. Rates of administration were 112 grams a day in one study and 2 1/2% of the diet by weight of live yeast culture. In several studies performance horses the long term use of a 1% by weight of the dry matter in the diet administration of live culture were associated with increased pack cell volumes and improved post exercise parameters like blood lactate levels. However there is a study that did not find these benefits.

### **Proposed Mechanisms of Action**

One of the reasons for the general skepticism surrounding these products is that there are no proven mechanisms of action. Some of the proposed ones are:

- competitive inhibition of enteric pathogens
- production of antimicrobial substances
- competition for adhesion receptors
- competition for nutrients,
- stimulation of immunity,
- and decreasing intestinal antigen absorption.

Extrapolating from recommendations in people, an average horse would likely require 10100 billion CFU/day of an organism able to colonise the intestinal tract. This may be difficult to achieve with some commercial probiotic preparations.

### **Are Probiotics 100% Safe to Experiment With?**

In general the reported incidence of adverse effects is almost nil. Probiotic organisms are classified by the FDA and other regulatory bodies as generally regarded as safe (GRAS). But the risk of infection or potentiating an infection is possible. *Lactobacilli* have been implicated in cases of bacteremia and endocarditis in humans, although probiotic organisms were not thought to be involved. A liver abscess in a person was found to contain the probiotic *Lactobacillus rhamnosus* strain GG (LGG). Certain species exhibit resistance to some antimicrobials and therefore have

the potential for plasmid-mediated transfer of antimicrobial resistance to pathogens. Some *Bifidobacterium* species are associated with dental cavities in people and it is unknown if they may have a deleterious effect on horses.

It has been suggested that some of these probiotic organisms may close large molecule transport pores in the intestinal wall. This may indicate that probiotics should be avoided in foals less than 24 hours of age due to the potential to decrease absorption of maternal antibodies.

If one of the mechanisms of action is stimulation of the immune system, the use of probiotics could be detrimental in auto-immune disease and colonization of IV catheters by some of these yeasts have occurred.

### ***Saccharomyces boulardii* and Colitis**

In one study the yeast organism *S. boulardii* given as a live lyophilized oral treatment at the rate of 25 gm, every 12 hours for 14 days significantly improved the clinical signs and shortened the duration on acute colitis of unknown causes compared with the placebo treated horses. *Saccharomyces boulardii* is a nonpathogenic yeast used in the treatment of *C. difficile* diarrhea and colitis in humans. It remains uncertain what exactly is the nature of this treatment but the yeast releases a protease that specifically degrades *C. difficile* toxins A and B, and this has been shown to be protective in experimental *C. difficile* colitis in rats and to prevent damage to human colonic epithelium by *C. difficile* toxins A and B in vitro. The yeast has mild virulence in mice, and its use in immunocompromised patients may not be entirely benign.

In this same study clinically normal horses were also studied with a similar treatment regimen. No adverse symptoms develop and though *S. boulardii* was not detected in faeces of clinically normal horses, the yeast survived within the gastrointestinal tract for a period but did not permanently colonise it.

### ***Saccharomyces boulardii* Information in Human Use**

This information, though taken from a commercial provider of human capsules containing *S. boulardii*, seems to be pretty straight forward and agrees with the results of my research~DrO.

### **What Is It Really?**

*Saccharomyces boulardii* (SB) is a live yeast packaged in capsules and sold over the counter in Europe to treat diarrhoea. Studies suggest that SB protects the gut from amebas and cholera, may keep candida from spreading, alleviates diarrhoea

caused by *C. difficile*, Crohn's disease and diarrhoea of unknown cause in PWAs, and traveller's diarrhoea.

### **How's It Work?**

We don't know. Test tube results show it doesn't directly kill the bugs (bacteria, fungi, or parasites) causing infection. Theories of how it works include: 1) SB or something it produces may prevent gut inflammation that causes diarrhoea, by interfering with how various bugs bind to gut cells; 2) SB might increase certain protective immune proteins that in turn kill the infection-causing bugs; and/or 3) SB might be a superior non-toxic competitor with amebas and candida in the intestine ("There ain't room in this gut for the both of us.").

### **SB for C. Diff Diarrhoea**

Taking antibiotics can cause diarrhoea by killing off little organisms you need to maintain a healthy digestive system. Then other naturally occurring bacteria and yeast may rage out of control 97 without their natural predators to keep them in check. *C. diff* is one of the most difficult of these antibiotic-caused diarrheas to treat, mostly because it's so resistant to most other antibiotics. It's usually treated with vancomycin – a fairly toxic drug, that often fails, with recurrence of severe diarrhoea. Several studies of SB have been conducted in people with antibiotic diarrheas. In one, 13 people with recurrent *C. diff* tried a regimen of thirty days SB plus 10 days of vancomycin – 11 were cured with no recurrence of *C. diff*. A placebo controlled study of 180 people on various antibiotics reported that 22% of the people on placebo got diarrhoea, but only 9.5% on SB did. A study of SB for infants with *C. diff* reported dramatic results as well.

### **Studies for Other Diarrheas**

The largest placebo controlled study of SB was in 3000 Austrians who took 250 or 1000mg while they travelled abroad. People on SB got significantly fewer cases of diarrhoea than those on placebo, and there were less cases on high dose than low dose. Another study evaluated SB in 20 patients with Crohn's disease, a life-long syndrome where people suffer from severe diarrhoea, gut pain and weight loss. They were all treated with SB (250 mg 2x/day) for two weeks. All had fewer bowel movements. Half stayed on SB, while the others were put on placebo for another ten weeks. Those on SB had reductions in bowel movements while the group on placebo went back to the same number of bowel movements that they had had when the study began.

### **Side Effects and Toxicity**

Few side effects have been reported from the use of SB. People with yeast allergies



should not take SB, and some people have complained of itchiness and facial swelling (sounds like ... yeast allergy). Because this product is composed of live yeast, you must not drink alcohol for it to be effective. Alcohol will kill the yeast. It is important to drink a lot of other liquids when you have a case of diarrhoea to avoid dehydration. SB is a different yeast than candida, which causes oral and vaginal thrush. SB does not increase thrush and in fact may lessen or prevent thrush infections. Some are concerned that since this is a living organism it may take root in an immune-compromised person and cause systemic infections. A number of people with AIDS have been on SB for more than a few years without any reported complications. But there have been three reported cases of systemic SB fungal infections. In two cases, patients had perforated colons after surgery, which allowed the yeast to escape their GI tracts. Both responded quickly to a course of Ampho B. A very ill one year old girl treated with SB and 6 antibiotics for pneumonia, diarrhoea, and fever developed an SB fungal infection. She was treated successfully with Fluconazole and improved overall with the use of aspirin. We must remember that she is an infant, and her system is substantially different than an adults. Normally, the yeast doesn't get absorbed; it moves right through the GI tract and is excreted in the stool in 3 to 5 days. Contact your doctor if you have any conditions that may cause a rupture in your GI tract (CMV, KS, MAC, ulcer) and you are taking SB.

### Drug Interactions

**Good News:** If you take SB with certain antibiotics, namely clindamycin and amoxi-

cillin, the level of SB in your gut is substantially increased. These antibiotics kill off other organisms that may eliminate the yeast, so elevated levels of SB when taking these antibiotics are good. These drugs can cause C. diff, which SB may keep in check. **Bad News:** Antifungals can kill SB, just like they kill candida and other fungal infections. Fortunately, fluconazole's effect on SB is minimal, and PWAs who want to try SB can continue to prophylax with a dose of 50-100 mg a day. Even so, for optimal effect, you should not take fluconazole and SB at the same time of the day.

### Dosing

The dose of SB differs depending upon the condition you are using it for, but ranges from 250-1000 mg a day. In PWAs with severe diarrhoea of unknown cause, the starting dose is at least three times as much – 3000 mg a day. You may not need to continue at this dose – if it gets your diarrhoea under control, you can gradually lower your dose till you find the lowest dose that works for you. In the Seattle study, if the SB works after two weeks, the people reduce their dose to 2000 mg a day. If it still works, after two more weeks, the dose is lowered another 1000 mg. This continues until each person finds his or her lowest effective maintenance dose.

### General Recommendations for Other Use in Horses

Looking at the research in other species it seems likely that probiotics may have a role in equine nutrition and medicine. Human studies suggest that probiotics may have the greatest utility in the prevention and treatment of antimicrobial associated diarrhoea, treatment of colitis, treatment of chronic diarrhoea and pre-

vention of acute infectious diarrhea in foals. It has been suggested that some of these probiotic organisms may close large molecule transport pores in the intestinal wall. This may indicate that probiotics should be avoided in foals less than 24 hours of age due to the potential to decrease absorption of maternal antibodies.

Selection of a commercial probiotic is difficult at this point due to paucity of objective research and the lack of appropriate labelling. Many commercial preparations do not list the organisms that are present and when they do the ingredients do not match the label claims. Also, many products list poorly defined additional ingredients. Without critical evaluation, all these products deserve skepticism. For critical evaluation of a product, it is essential to know the species and strain of the organism(s), the concentration, and whether colonisation and efficacy studies have been performed. Some of the attributes one should attempt to find in a probiotic for a reasonable expectation of efficacy are:

- Label states the species, strain, and the number of viable organisms. More research is needed, but equine doses of 10 to 100 billion CFU/day seem reasonable at this point.
- Best, though not possible at this time, would be to use only organisms that have been demonstrated to colonise the intestinal tract of horses.
- A practical shelf life established.
- Efficacy of the product has been shown clinically.

**If you are looking for a yeast culture supplement Diamond V Yeast, is a well established product.**





# 2012 PHAA Approved Shows

DATE	CLUB	SHOW, VENUE & JUDGE/S
4/03/2012	DDWPC	DARLING DOWNS WESTERN PERFORMANCE CLUB Allora Showgrounds, Contact: Timothy McIntyre, Ph: 0435 288 903, Entries Close: 29th February 2012, Judges Loreli Payne and Lyn Hoffman
3/3/2012 4/03/2012	M&DWPC Inc.	MARYBOROUGH & DISTRICT WESTERN PERFORMANCE CLUB Inc. Maryborough Showground Under Cover Arena, Contact: Lisa Silvester 07 4125 5257 or 0418 771 523, Entries accepted on the day, Judge Kerris Holzberger
7/3/2012 to 11/3/2012	AHS	AUSTRALIAN HALTER SHOWCASE National Equestrian Centre, Werribee Park, Victoria, Contact: Jenny Turner, Ph: 03 5966 6142 or 0408 306 190, Email: australianhaltershowcase@bigpond.com, Entries to: Lot 7 Bell St, Seville VIC 3139, Entries Close: 3rd February 2012, Entries on day: Yes – with late fees, Judges Casey & April Devitt (Kentucky USA)
11/3/2012	PHA of SA	PAINT HORSE ASSOC OF SOUTH AUSTRALIA WESTERN ALL BREEDS SHOW Wooma Equestrian Centre, Contact: Berni McGarnly, Ph: 08 8528 6305, Entries accepted on the day, Judge John Goodworth
11/3/2012	CCRAC	CENTRAL COAST REGIONAL APPALOOSA CLUB Ilcadore Somersby, Contact: Vicki Hagan, Phone: 02 4362 2865 or 0406 374 309, Entries on the day, Judge Denis Drew
11/3/2012	SWPHA of WA	STATEWIDE PAINT HORSE ASSOC OF WESTERN AUSTRALIA WA STATE CHAMPIONSHIPS Brookleigh Indoor, Contact: Melissa Armitage, Ph: 0403 258 597, Entries Close last mail 24th February 2012, PO Box 354 Serpentine WA 6125, Judge Janeen McRobert
11/3/2012	SEQPHC	SOUTH EAST QUEENSLAND PAINT HORSE CLUB INC Caboolture Showground, Contact: Cynthia Anning, Phone: 07 5494 1071, Entries on the day, Judge TBA
11/3/2012 12/3/2012	CWPH&AC	CENTRAL WESTERN PERFORMANCE HORSE & APPALOOSA CLUB Dubbo Showground, Contact: Bette Thatcher, Phone: 02 6889 5568, Entries on the day, Judge TBA
18/3/2012	SBWPC	SOUTH BURNETT WESTERN PERFORMANCE CLUB INC Nanango Equestrian Centre, Racecourse Rd, Nanango QLD, Contact: Sarah Saxer, Phone: 0419 631 025, Entries on the day, Judge TBA
17/3/2012 18/3/2012	HVRAC	HUNTER VALLEY REGIONAL APPALOOSA CLUB Alexander Park, Salt Ash, Contact: Belinda Richardson, Phone: 02 6574 1270, Entries accepted on the day, Judge TBA
17/3/2012 18/3/2012	SCWPAC	SAPPHIRE COAST WESTERN PERFORMANCE & APPALOOSA Jindabyne Equestrian Resort, Contact: Rebecca Warner, Phone: 02 6236 3269, Entries accepted on the day, Judge Conny Barry
18/3/2012	ECAP&WPA	EAST COAST APPALOOSA PAINT AND WESTERN PERFORMANCE ASSOCIATION Wauchope Showground covered Arena, Contact: Meaghan Hennessy, Phone: 02 6587 1228, Entries accepted on the day, Judge TBA
24/3/2012 25/3/2012	GDWPC	GUNALDA & DISTRICT WESTERN PERFORMANCE CLUB A-Show Nambour Show grounds 24th, AA-Show Nambour Show grounds 25th, Contact: Samantha Calvert, Phone: 07 5483 9460, Entries on the day, Judges Kerris Holzberger, Steve Thanke & Joanne Gregory
25/3/2012	PHSSA	PAINT HORSE ASSOC OF SOUTH AUSTRALIA STATE SHOW Mallala Equestrian Centre, Contact: Berni McGarnly, Ph: 08 8528 6305, Entries accepted on the day, Judge Allison Morgan
26/3/2012 27/3/2012	AAA	AUSTRALIAN APPALOOSA ASSOC LTD PRE NATIONAL WESTERN BREED SHOW Dubbo Showground, Contact: Kiara LeCerf – PO Box 3212 West Tamworth NSW 2340, Ph: 02 6765 7969, Entries close 24th February 2012, Judge Conny Barry
31/3/2012 to 1/4/2012	PPHAT	PERFORMANCE PAINT HORSE ASSOCIATION TASMANIA TASMANIAN STATE SHOW Violet Banks, Westbury, Tasmania, Contact: Vicki Hume, Entries: Postal entries only to: Diane Johnston, 3732 West Tamar Hwy, Beaconsfield Tas., Entries close 23rd March 2012, Judge TBA
1/04/2012	M&DWPC Inc.	MARYBOROUGH & DISTRICT WESTERN PERFORMANCE CLUB Inc. Maryborough Showground Under Cover Arena, Contact – Lisa Silvester 07 4125 5257 or 0418 771 523, Entries accepted on the day, Judge Leslie Smith
6/4/2012 7/4/2012	CWPH&AC	CENTRAL WESTERN PERFORMANCE HORSE & APPALOOSA CLUB Dubbo Showground, Contact: Bette Thatcher, Phone: 02 6889 5568, Entries on the day, Judge TBA



# 2012 PHAA Approved Shows

DATE	CLUB	SHOW, VENUE & JUDGE/S
7/4/2012 8/4/2012	VPHA	VICTORIAN PAINT HORSE ASSOCIATION INC STATE SHOW Contact: Karen McCormick, Judge David Young
15/4/2012	SBWPC	SOUTH BURNETT WESTERN PERFORMANCE CLUB INC Nanango Equestrian Centre, Racecourse Rd, Nanango QLD, Contact: Sarah Saxer, Phone: 0419 631 025, Entries on the day, Judge TBA
15/4/2012	ECAP&WPA	EAST COAST APPALOOSA PAINT AND WESTERN PERFORMANCE ASSOCIATION Wauchope Showground covered Arena, Contact: Meaghan Hennessy, Phone: 02 6587 1228, Entries accepted on the day, Judge TBA
26/4/2012 27/4/2012	TDWAP&AC	TAMWORTH DISTRICT WESTERN PERFORMANCE & APPALOOSA CLUB Tamworth Showground Indoor Arena, Tamworth, Contact: Carol Willding, Phone: 02 6769 7644, Entries Close: 13th April 2012, Judge Don Northey
29/04/2012 to 5/05/2012		PHAA NATIONAL SHOW TAMWORTH
6/05/2012	M&DWPC Inc.	MARYBOROUGH & DISTRICT WESTERN PERFORMANCE CLUB Inc. Maryborough Showground Under Cover Arena, Contact: Lisa Silvester 07 4125 5257 or 0418 771 523, Entries accepted on the day, Judge TBA
10/5/2012 to 13/5/2012	NSWPHA	NSW PAINT HORSE ASSOC STATE SHOW Sydney International Equestrian Centre, Contact: Diana Perkin, Phone: 0418 452 741, Entries Close: 30th March 2012, Judge TBA
20/5/2012	ECAP&WPA	EAST COAST APPALOOSA PAINT AND WESTERN PERFORMANCE ASSOCIATION Wauchope Showground covered Arena, Contact: Meaghan Hennessy, Phone: 02 6587 1228, Entries accepted on the day, Judge TBA
20/5/2012	SEQPHC	SOUTH EAST QUEENSLAND PAINT HORSE CLUB INC Caboolture Showground, Contact: Cynthia Anning, Phone: 07 5494 1071, Entries on the day, Judge TBA
26/5/2012 27/5/2012	GDWPC	GUNALDA & DISTRICT WESTERN PERFORMANCE CLUB A-Show Nambour Show grounds, Contact: Samantha Calvert, Phone: 07 5483 9460, Entries on the day, Judge Kerris Halzberger
23/5/2012 to 27/5/2012	NPHA	NATIONAL PLEASURE HORSE ASSOC Pleasure Celebration 2012 Sydney Int. Equestrian Centre Horsley Park NSW, Contact: Joanne Green, Phone: 0437 703 353, Entries Close: 22/4/2012, Judge Bill Kaven (USA)
2/06/2012	M&DWPC Inc.	MARYBOROUGH & DISTRICT WESTERN PERFORMANCE CLUB Inc. Maryborough Showground Under Cover Arena, Contact: Lisa Silvester 07 41 255 257 or 0418 771 523, Entries accepted on the day, Judges Lyn Hoffman, Trail - TBA

## REMINDER:



**SALE BARN RESTARTING:** The Sale Barn section of the website marketplace is being reinstated. Current financial members may advertise up to three registered horses for free. Go to the Sale Barn page for information.

**RENEWAL OF MEMBERSHIP:** Membership of the PHAA becomes due on 1st July each year. If you have not received a membership renewal form in the mail, simply download the membership form from the website, print out, fill in and send with your payment to the PHAA office. Different fees apply to the different types of membership. Payment may be made by cheque, money order or credit card.

**MERCHANDISE AVAILABLE:** show your support for the PHAA and purchase our embroidered cap for \$25 or stickers (large - \$10, small - \$5).





# PHAA Schedule of Fees

**All fees include GST, for further information contact the PHAA Office effective as at 1st July 2011**

## ANNUAL MEMBERSHIP FEES

Full Membership	\$155
Constituent	\$170
Family	\$210
Senior Youth	\$60
Junior Youth	\$55
Limited Youth	\$45
Life (Subject to BOD approval)	\$2,000
<i>Discounted Youth memberships available for Youth residing with another current member</i>	
Discounted Senior Youth	\$40
Discounted Junior Youth	\$35
Discounted Limited Youth	\$20

## AMATEUR OWNER FEES (MUST BE MEMBERS)

Amateur Owner card	\$35
If paid with membership deduct	-\$5
<i>Novice &amp; Master Amateur must have current Amateur owner card</i>	
Novice Amateur Card	\$15
Master Amateur Owner (Over 50)	\$15

## AFFILIATED CLUBS

Annual Affiliation fee	\$120
------------------------	-------

## REGISTRATION FEES

Up to 6 months	\$80
From 6 - 12 months	\$100
12 months and over	\$140
Paint Bred/Breeding Stock deduct	-\$20
Gelding Amnesty Application	\$110
GA Registration fee (on approval)	\$140
Stallion upgrade (including DNA) (not including registration fee)	\$500
Failure to Upgrade Stallion prior to breeding	\$2000
Imported APHA Stallions (incl PHAA regn) (If not DNA tested in USA additional fee \$100 for DNA parentage testing applies)	\$500
Prefix/Stud Name	\$75
Change of Horse Name	\$100
Listing Fee QH/TB	\$75
Listing Fee International QH/TB	\$75

## TRANSFER FEES

TTTransfer fee	\$50
Penalty fee for late lodgement of transfer	\$50
<i>First transfer for new members free if sent with membership application</i>	

## LEASE FEES

Lease agreement	\$50
Penalty fee for late lodgement of lease	\$50

## RIDE AUSTRALIA

Lifetime listing fee	\$50
Late lodgement of time logs	\$25

## YEARLY BREEDING REPORTS

Per mare	\$10
Late lodgement - per mare	\$50

## GENETIC TESTING

DNA Typing	\$110
Overo Testing (OLW)	\$90
Combined DNA/OLW test	\$182.50
HYPP/Herda	\$90
Red Factor/Agouti/Cream Dilution	\$90

## REGISTRATION & DNA KIT (combined)

Horse up to 6 months	\$150
Horse 6 - 12 months	\$180
Horse 12 months & over	\$220

## SHOW FEES

State Show	\$80
Single Judge Show	\$25
Annual blanket - Open Shows (max 10)	\$130
Additional show after 10	\$20
Open Show Amendment to Program	\$15
Paint-O-Rama	\$60
Multi-judge Open Show	\$60
Late lodgement of Show results	\$75

## POINTS RELATED FEES

Late lodgement of Show Results Form	\$35
<i>(Only accepted up to 60 days from date of Show)</i>	
Printed record of Points	\$25
Duplicate Award Certificates	\$25

## PUBLICATIONS

Show Results Books	\$30
Service Certificate Books	\$30
Rule Books	\$15
Printed Pedigrees	\$50
Paint Horse Journal Subscription	\$50
Back Issues each (when available)	\$15

## OTHER FEES/PENALTY FEES

Incomplete/incorrect paperwork	\$25
Failure to Upgrade Stallion prior to breeding	\$2000
Failure to Upgrade Mare prior to breeding	\$50
Replacement Registration Certificate	\$35
Inspection of Horse	\$75
<i>(In addition, travel costs of inspector)</i>	
Reserve A Horse Name	\$45
Rush Fee (per item)	\$50
Information Request fee	\$25

## PLEASE NOTE:

Credit Card Payments will attract a 2.00% Merchant Fee. Payments that are dishonoured by the bank will attract \$10.00 fee. Payments will not be held once received by the office. Please ensure you have sufficient funds available.

## REMINDER:



**Please make sure all your paperwork is complete before sending it on to the office.**

**Please ensure that your email details are kept up to date with the office so we can keep in contact and keep you informed.**

## HOW TO CONTACT PHAA DIRECTORS:

Members may contact individual PHAA Directors for any information they require concerning particular portfolios that are overseen by each Director. The list of Directors, portfolios and contact details are in the front of the Journal and on the PHAA website: [www.painthorse.com.au](http://www.painthorse.com.au)



# Mouse Mats THEY'RE HERE!!!



Available in two sizes  
23.5cm x 19cm or 42cm x 29.7cm  
You also receive  
Four matching coasters

**Small - \$15 with a FREE Coaster**  
**Large - \$25 with a FREE Coaster**



**Email your Mouse Mat Order Now.**  
**Tania - 0419 742 949**  
**tmdgroup@bigpond.com**



TRY THE DIGITAL EDITION OF  
*the* **HORSE**  
YOUR GUIDE TO EQUINE HEALTH CARE  
**FOR ONLY \$7.99**

The Horse Digital Edition delivers the EXACT news and in-depth, veterinarian-approved articles as the print edition - without the delivery fees. Plus, you'll get your digital copy of The Horse delivered days ahead of the print edition - all for only \$7.99!

Here are some more reasons to try the Digital Edition:

- ✓ Convenient format that eliminates paper use and is available from any computer
- ✓ Instant email notification when issues are online
- ✓ Each issue is searchable and includes links to online content
- ✓ Available days before the print edition
- ✓ No international delivery charges

To subscribe visit [www.TheHorse.com/799](http://www.TheHorse.com/799) or call 1-800-582-5604

The Horse | 3101 Beaumont Centre Circle | Lexington, KY 40513 | 800.582.5604

CA11000018

## ARTICLE DEADLINE & CONTACT:



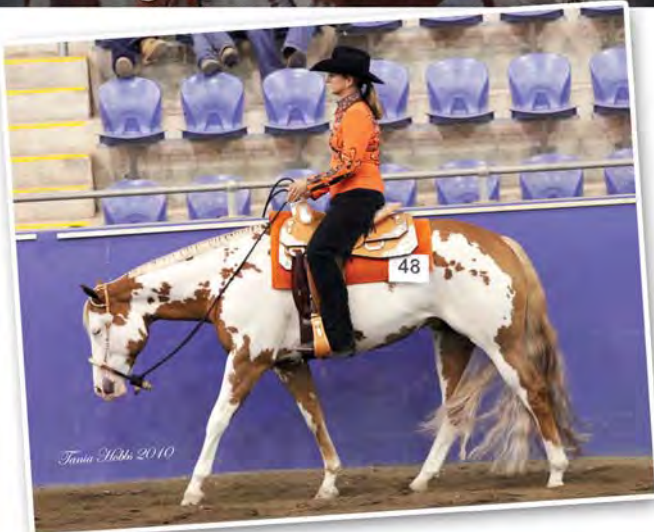
**Deadline for the next issue  
will be the 1st May.**

**Please book your ads early it  
is a great one to begin your  
stallion promotions in.**

**phone Tania - 0419 742 949**  
**Email enquires to**  
**[journal@painthorse.com.au](mailto:journal@painthorse.com.au)**

## Paints for Pleasure

Leading AQHA and PHAA bloodlines...



**dominion  
equine**

The Geissler Family  
Beaudesert (near Brisbane), Qld.  
**Phone: 0419 815 778**  
**Email: [info@dominionequine.com.au](mailto:info@dominionequine.com.au)**  
**Website: [www.dominionequine.com.au](http://www.dominionequine.com.au)**

**Looking for  
your next  
WINNER?**

**We have great  
prospects  
For Sale.**

**Loots Image**  
*'Limited bookings for 2012'*  
**PAINTS**  
**Grantham, Qld. 07 54661976**  
**[cdpaints@tpg.com.au](mailto:cdpaints@tpg.com.au)**  
**[www.lootsimage.8m.com.au](http://www.lootsimage.8m.com.au)**  
**Find us on Facebook**



## Homozygous Tobiano

100% coloured foals

*Ripped Jeans* (IMP) USA

Service Fee  
\$1250 LFG  
plus vet &  
agistment  
All available



100% Colour producer with no lethal white foals.  
Black and White, Great Temperament, Working Bloodlines  
Ripped Jeans is Agouti neg

Contact Lyle or Ray Franklin, Grafton NSW  
Phone: 02 6642 7615 Email: kaglyle7@bigpond.com

Artwork Tania Hobbs 2011 Photo Karalinea

## Double Fax

(imp)

14.3hh reg PHAA, APHA Pinto  
Homozygous Tobiano

**Stud Fee: \$800**

Plus vet and agistment  
or collection and freight.  
Live coloured foal guarantee.

standing at  
Olive Grove Equine Centre  
Bullsbrook WA  
bookings essential.

M: 0414 698 590

E: mail@nashvillefarm.com.au

[www.nashvillefarm.com.au](http://www.nashvillefarm.com.au)



Performance bloodlines, great minded, great mover.

(CANNONS) **PEPPABAR**

PHAA 7972, Merda/CWLS neg

Sire: Peppys Doc Bar  
Dam: Oaks Peggy Sue

**\$750 LFG**

(\$200 non-  
refundable  
booking fee)

All available

Contact:

Madeleine Cannon

Geurie NSW

02 68 871 513 or mob 0408 871 518

email: maddycan@bigpond.com



## Performance Training and Riding Lessons

Now training at Tamaru Park, Badgers Creek.

Full facilities including Floodlit Arena, Stables,  
Day Yards, Stallion Yards, Sand Roll,  
Hot & Cold Washbay.  
Agistment available.



Michelle Bruce  
0403 047 703  
michellebruce.clinic@gmail.com  
or find me on facebook.

## Horse Breaking

Offering an honest start for all disciplines.  
Safe professional facilities

Dave Tucker

Mt Tarampa via Gatton

Phone: 07 5427 9225 or Mobile: 0408 722 430

dtucker-1@bigpond.com



## Australia's Premier Western Pleasure Store Horseman's Trading Post

"2012 Hobby Horse Clothing is being sold at USA RRP+ GST"



Ad design Tania Hobbs

07 3341 5220

481 Underwood Rd, Rochdale QLD 4123

[www.horsemanstradingpost.com.au](http://www.horsemanstradingpost.com.au)



# The Equine Photography & Design Specialists

- Event Photography
- Horse & Rider Portraiture
- Stud Photography
- Graphic Design
- Web Design
- Equine Greeting cards



Ph. (07) 5472 3494 M. 0438 746 873

info@agilephotographics.com

[WWW.AGILEPHOTOGRAPHICS.COM](http://WWW.AGILEPHOTOGRAPHICS.COM)

## JOURNAL ADVERTISING FEES 2012

### General Advertising

<b>ISFC, ISBC, OSBC</b>	<b>\$385</b>	(paid per issue but must be booked for 12 months)   210 mm width x 297 mm height, please add 3 mm bleed on each side
<b>Double page</b>	<b>\$660</b>	420 mm width x 297 mm height, please add 3 mm bleed on each side
<b>Full page</b>	<b>\$330</b>	210 mm width x 297 mm height, please add 3 mm bleed on each side
	<b>\$300</b>	if booked for 12 months   4 issues
<b>Half page</b>	<b>\$165</b>	190 mm width x 136 mm height, no bleed required

### Directory Advertising

<b>Full page</b>	<b>\$300</b>	210 mm width x 297 mm height, please add 3 mm bleed on each side
<b>Half page</b>	<b>\$150</b>	190 mm width x 136 mm height, no bleed required
	<b>\$140</b>	if booked for 12 months   4 issues   (paid in 2 payments of \$280, ads run with no change for 2 issues, then may be changed for next 2)
<b>Quarter Page</b>	<b>\$80</b>	93 mm width x 136 mm height, no bleed required
	<b>\$70</b>	if booked for 12 months   (paid in 1 payment, ads run with no changes each issue)
<b>1/8th page</b>	<b>\$40</b>	93 mm width x 66 mm height, no bleed required
	<b>\$37.50</b>	if booked for 12 months   4 issues   (paid in 1 payment, ads run with no changes each issue)

Artwork is to be saved as a 300dpi jpeg, EPS or PDF file, CMYK colour mode. Text to be saved as a word document.

For all advertising/booking enquiries and advertising material please **contact or email directly to Tania Hobbs, 07 3206 7567 or 0419 742 949, journal@painthorse.com.au**



2007 16hh Chestnut Overo Stallion

# You Bet I'm Krymsun

A great debut in the show pen in 2011.  
Just some of his achievements...

2011 Summer Sizzler 3yo HUS Champion  
2011 AHS 3yo HUS Showcase Reserve Champion  
2011 NSWQH 3yo WP Feature Top 10  
2011 NPHA 3yo Trail Res. Champion  
2011 NPHA 3yo WP, 3yo HUS Top 5  
2011 Energex Celebration High Point 3yo  
2011 NSW & Qld State Champion 3yo WP  
plus multiple other Champion &  
Reserve Champion titles.

And he's only just getting warmed up!  
Watch for another stellar year in the  
show pen in 2012.



Sired by multiple World &  
Congress Champion & AQHA leading sire  
**One Hot Krymsun (USA).**

**Standing at stud in 2012**  
to a strictly limited book of credentialed,  
OLW negative mares.  
Early applications are encouraged as we  
anticipate his book will fill early.

Trained & shown by  
Travis Humphries & Natasha Backhouse,  
TNT Training Stables.



Supported by:



**vet-n-pet DIRECT**



## dominion equine

*Paints for Pleasure*

07 5543 1150 | 0419 815 778  
info@dominionequine.com.au

www.dominionequine.com.au



# "It's as easy as 1 - 2 - 3"



## Ratchetts *Impressed*

**The only Paint Sire to have sired  
High Point 2YO of Australia  
3 years in a row, with only 3 years of ridden progeny!**

**Ratchetts Delight**

2009 High Point 2YO of Australia  
Owner John & Kellie Peardon, Trainer Merideth Rehn



**KPM Racketeer**

2011 High Point 2YO of Australia Owner Gail Smith, trainer Leanne Bartlett



**HMF White Hot**

2010 High Point 2YO of Australia  
Owner John & Kellie Peardon, Trainer Merideth Rehn



**Oh, and he has also sired winners of several  
National Grand Champions at Halter**

**Lead them, Lope them or just Love them**  
*great minded, good looking babies available for sale.*



Jeffrey and Lee Ann Hall

61L Lagoon Creek Rd, Dubbo NSW 2830

Phone: 02 6887 2280 ~ Mobile: 0412 136 096 ~ Email: [Jeffrey.Hall@bigpond.com](mailto:Jeffrey.Hall@bigpond.com)

**Take a moment and visit: [www.hallmarkfarm.com](http://www.hallmarkfarm.com)**

Artwork Tania Hobbs Photos - Marg Oakden and Agile